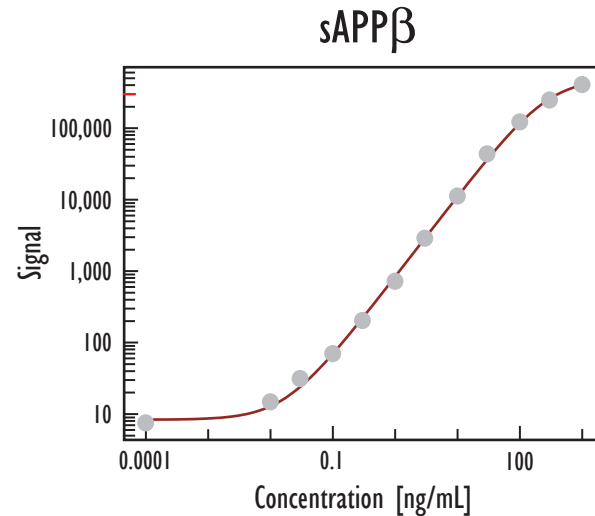
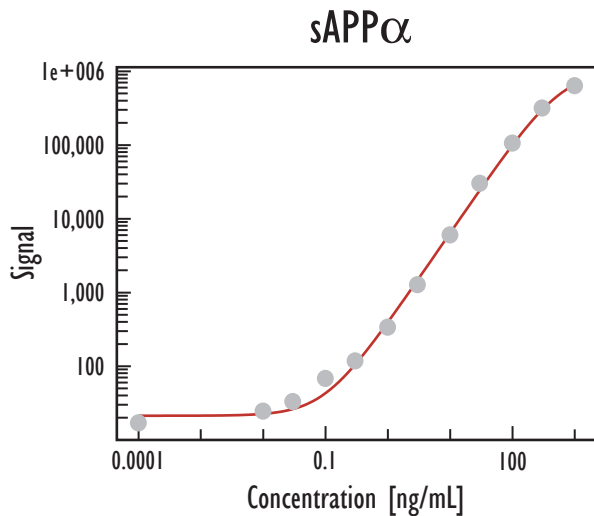
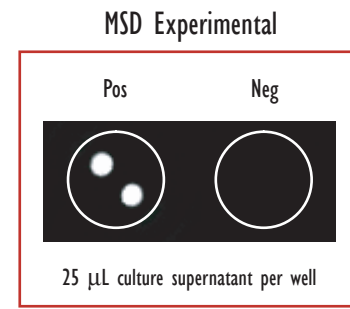
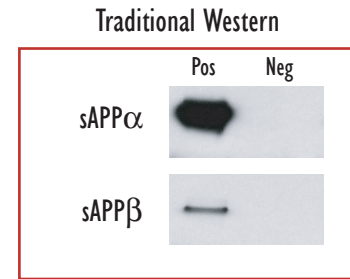
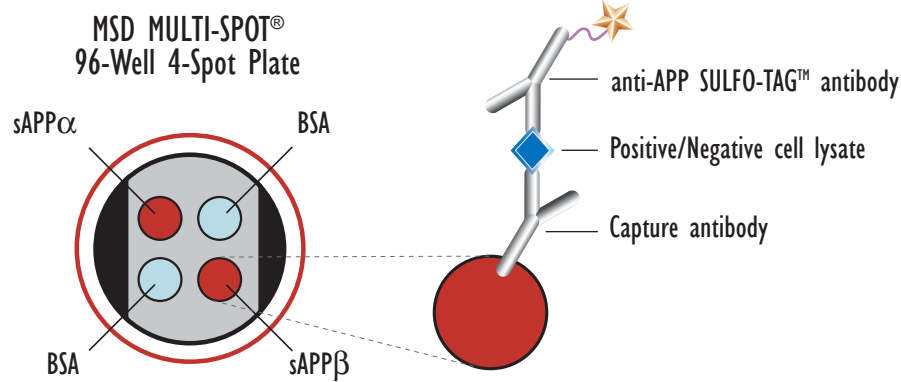


Multiplex Soluble APP Assay: Detection of Human sAPP α & sAPP β in the Same Well



Concentration	Average	StdDev	%CV	P/N
0	17	10	62	1
0.01 ng/mL	32	9	28	2
0.03 ng/mL	33	7	22	2
0.1 ng/mL	68	8	12	4
0.3 ng/mL	118	7	6	7
1 ng/mL	337	3	1	20
3 ng/mL	1,271	49	4	75
10 ng/mL	6,012	586	10	354
30 ng/mL	30,119	491	2	1,772
100 ng/mL	105,764	17,363	16	6,221
300 ng/mL	316,441	6,268	2	18,614
1 μ g/mL	634,377	50,042	8	37,316

Concentration	Average	StdDev	%CV	P/N
0	10	6	62	1
0.01 ng/mL	20	6	31	2
0.03 ng/mL	31	5	16	4
0.1 ng/mL	70	14	20	9
0.3 ng/mL	203	18	9	26
1 ng/mL	720	60	8	93
3 ng/mL	2,878	219	8	371
10 ng/mL	11,193	1,596	14	1,444
30 ng/mL	43,550	3,390	8	5,619
100 ng/mL	121,938	5,558	5	15,734
300 ng/mL	246,786	16,891	7	31,843
1 μ g/mL	405,610	35,490	9	52,337

Recombinant human sAPP α and sAPP β were purified from mammalian cells (>95% pure) and diluted in fresh culture medium (DMEM, 10% FBS, Pen/Strep). Samples were added to MSD MULTI-SPOT 4-Spot plates coated with anti-sAPP α and sAPP β antibodies on two of the four spatially distinct electrodes per well. The sAPP α and sAPP β proteins were detected with anti-APP antibody labeled with MSD SULFO-TAG reagent.

Detection Limits (3 StdDev over bkgnd)	
sAPP α	120 pg/mL
sAPP β	52 pg/mL