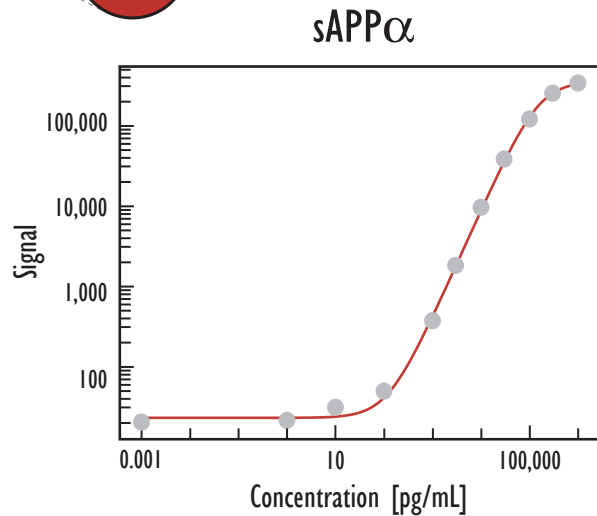
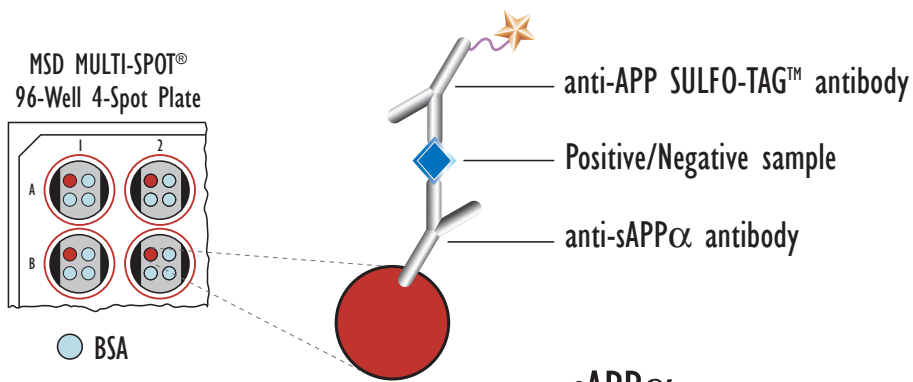


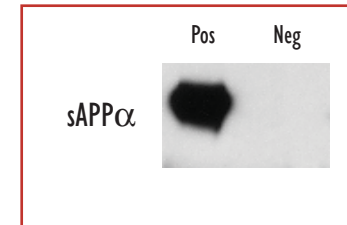
Detection of Human Soluble APP α (sAPP α)



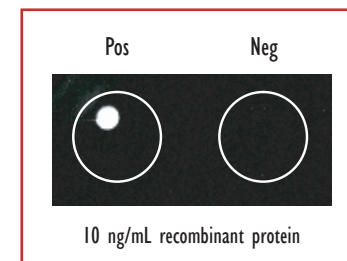
Detection Limit (3 StdDev over background): 254 pg/mL

Concentration	Average	StdDev	%CV	S/B
0	20	22	109	
1 pg/mL	32	8	27	2
10 pg/mL	47	6	14	2
100 pg/mL	74	3	4	4
300 pg/mL	92	11	11	5
1 ng/mL	373	16	4	18
3 ng/mL	1,827	181	10	90
10 ng/mL	9,711	423	4	478
30 ng/mL	38,780	971	3	1,907
100 ng/mL	122,396	1,162	1	6,019
300 ng/mL	257,081	8,794	3	12,643
1 μ g/mL	344,233	13,166	4	16,930

Traditional Western



MSD Experimental



Recombinant human sAPP α was purified from mammalian cells (>95% pure) and diluted in fresh culture medium (DMEM, 10% FBS, Pen/Strep). Samples were added to MSD MULTI-SPOT 4-Spot plates coated with anti-sAPP α antibody on one of the four spatially distinct electrodes per well. The sAPP α protein was detected with anti-APP antibody labeled with MSD SULFO-TAG reagent.

Cross Reactivity (at 100 ng/mL)

wt sAPP β	$\leq 0.62\%$
sw sAPP β	$\leq 0.45\%$



Meso Scale Discovery
A division of Meso Scale Diagnostics, LLC.
www.mesoscale.com