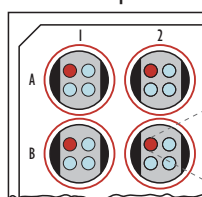


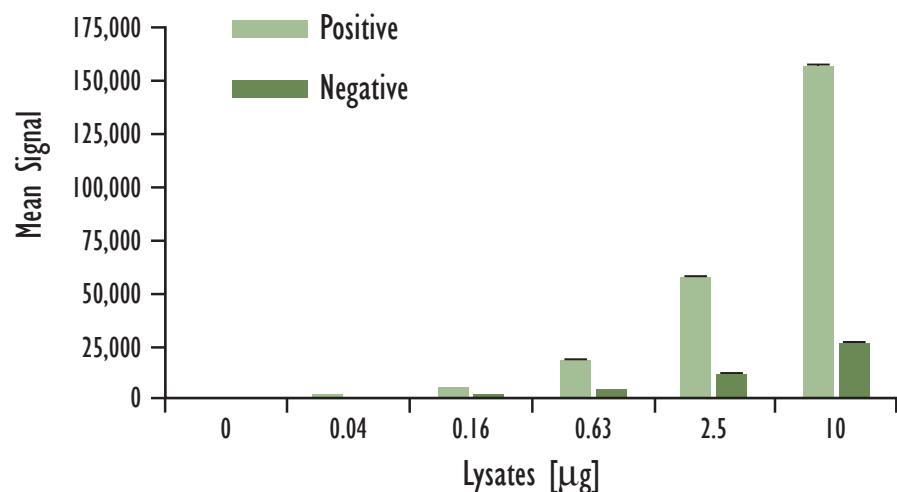
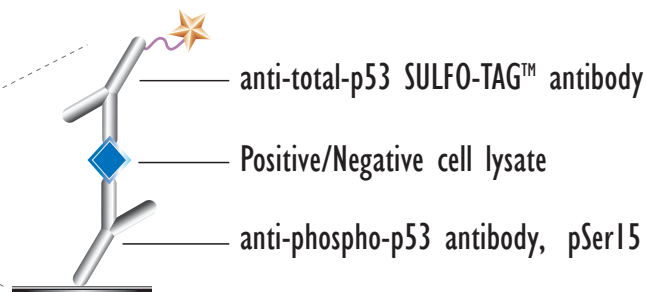
# MULTI-ARRAY<sup>®</sup> Phospho-p53 (Ser 15) Assay

Detection of Phosphorylated p53 in Whole Cell Lysate Samples

MSD MULTI-SPOT<sup>®</sup>  
96-Well 4-Spot Plate

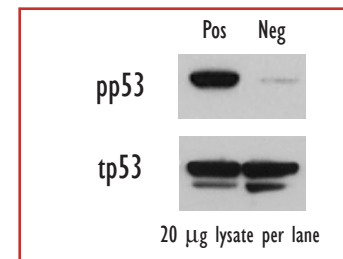


● BSA

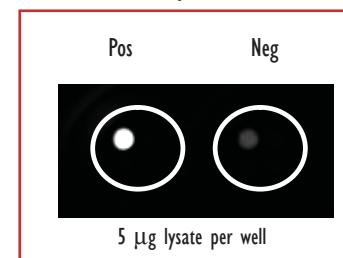


Lysates (µg)	pp53 Positive			pp53 Negative			P/N
	Average	StdDev	%CV	Average	StdDev	%CV	
0	57	8	14	41	3	7	
0.04	1,627	14	1	463	1	0	3.5
0.16	5,241	148	3	1,383	25	2	3.8
0.63	17,832	728	4	4,415	8	0	4.0
2.5	56,714	1,356	2	11,920	335	3	4.8
10	155,763	1,512	1	26,580	553	2	5.9

Traditional Western



MSD Experimental



Growing HT-29 cells (negative) were harvested 1 hr after UV irradiation (40 mJ/cm<sup>2</sup>)(positive). Whole cell lysates were added to MSD MULTI-SPOT 4-Spot plates coated with anti-phospho-p53 antibody on one of the four spatially distinct electrodes per well. Phosphorylated p53 was detected with anti-total-p53 antibody labeled with MSD SULFO-TAG reagent.

Kit Size	SI2400	SI6000
1 plate	KI51DAD-1	KI11DAD-1
5 plates	KI51DAD-2	KI11DAD-2
20 plates	KI51DAD-3	KI11DAD-3
20 plates (Base)	KI51DAA-3	KI11DAA-3