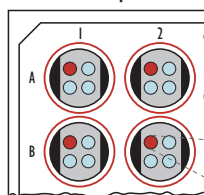
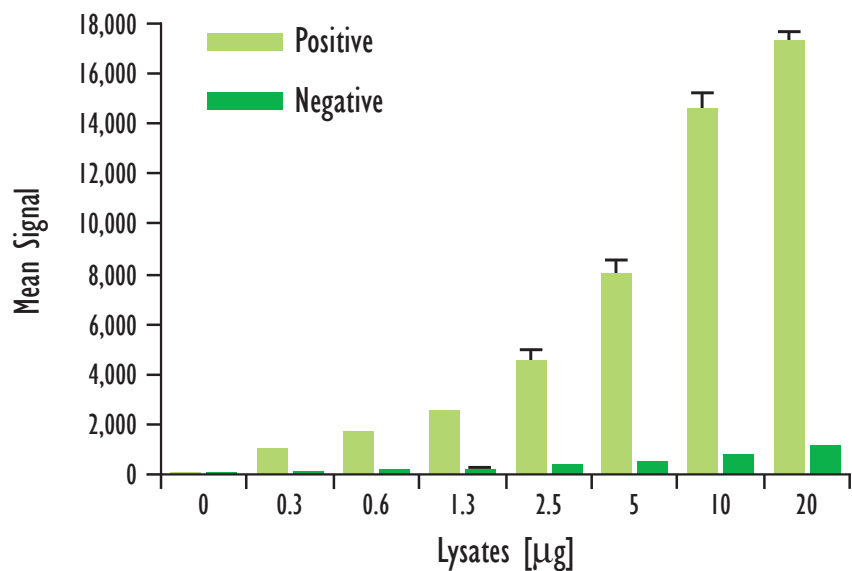
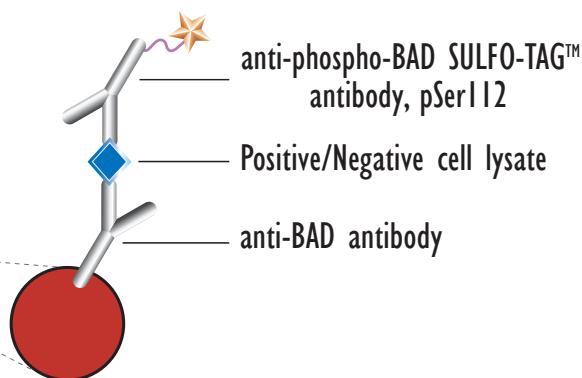


Detection of Phosphorylated BAD

MSD MULTI-SPOT®
96-Well 4-Spot Plate

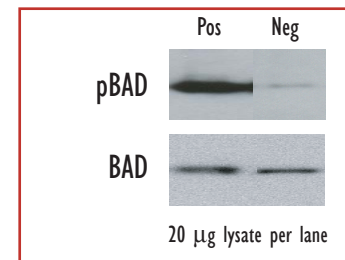


● BSA

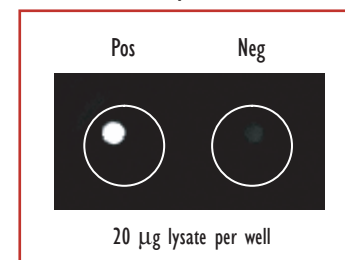


Lysates (µg)	pBAD Positive			pBAD Negative			P/N
	Average	StdDev	%CV	Average	StdDev	%CV	
0	46	7	14	48	14	29	
0.3	1,006	20	2	117	12	11	8.6
0.6	1,671	48	3	158	5	3	10.6
1.3	2,567	13	1	227	19	8	11.3
2.5	4,490	494	11	341	16	5	13.2
5	7,970	576	7	496	7	1	16.1
10	14,520	737	5	727	31	4	20
20	17,271	418	2	1,115	36	3	15.5

Traditional Western



MSD Experimental



Growing COS-7 cells were treated with staurosporine (1 µM; 3 hr)(negative). Serum deprived COS-7 cells were treated with PMA (200 nM, 1 hr)(positive). Whole cell lysates were added to MSD MULTI-SPOT 4-Spot plates coated with anti-total-BAD antibody on one of the four spatially distinct electrodes per well. Phosphorylated BAD was detected with an anti-phospho-BAD antibody labeled with MSD SULFO-TAG reagent.



Meso Scale Discovery
A division of Meso Scale Diagnostics, LLC.
www.mesoscale.com