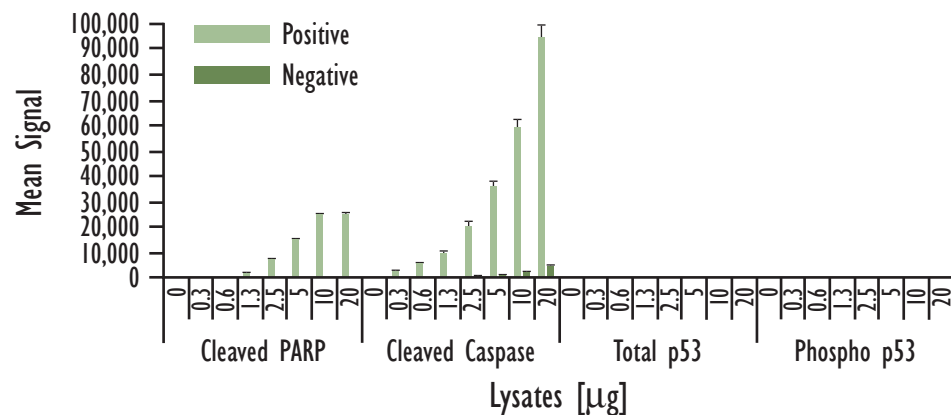
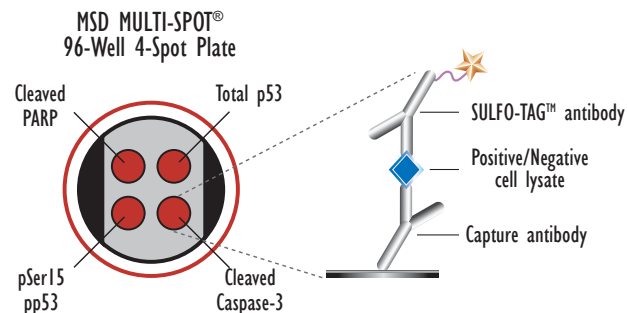


MULTI-SPOT® Apoptosis Panel Assay

Multiplexed Detection of Phosphorylated and Total p53 and Cleaved Caspase-3 and PARP in Whole Cell Lysate Samples

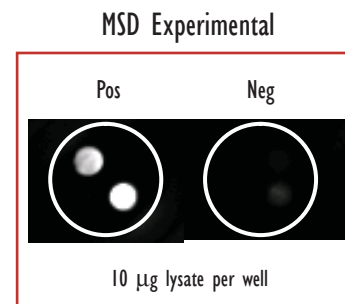
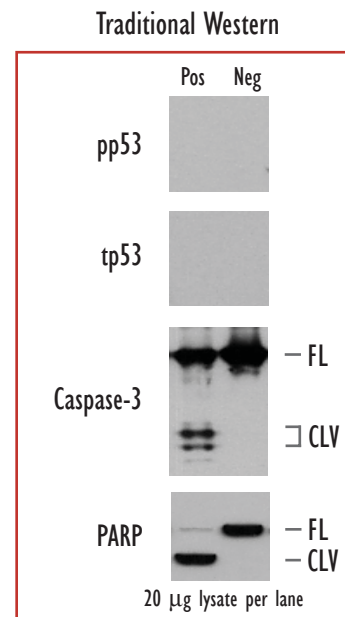


	Lysates (µg)	Positive			Negative			P/N
		Average	StdDev	%CV	Average	StdDev	%CV	
Cleaved PARP	0	70	15	21	72	7	9	
	0.3	216	20	9	76	16	21	2.8
	0.6	582	39	7	67	17	25	8.7
	1.3	2,248	82	4	75	15	20	29.8
	2.5	7,259	304	4	102	16	16	70.9
	5	15,184	286	2	118	10	9	128.7
	20	24,894	382	2	157	17	11	158.6
Cleaved Caspase-3	0	45	11	23	47	9	19	
	0.3	2,724	93	3	143	17	12	19.0
	0.6	5,655	248	4	221	21	9	25.6
	1.3	10,085	597	6	400	46	12	25.2
	2.5	19,978	2,132	11	764	79	10	26.1
	5	36,055	2,163	6	1,373	24	2	26.3
	20	59,357	3,203	5	2,660	86	3	22.3
tp53	0	43	17	38	53	18	34	
	0.3	65	19	29	64	7	10	1.0
	0.6	77	12	15	83	4	4	0.9
	1.3	92	7	8	101	18	18	0.9
	2.5	171	29	17	167	9	6	1.0
	5	234	29	12	293	8	3	0.8
	20	281	49	18	500	52	10	0.6
pp53	0	42	2	4	42	13	31	
	0.3	64	33	51	47	7	15	1.4
	0.6	76	21	28	45	10	22	1.7
	1.3	86	13	15	53	13	24	1.6
	2.5	155	17	11	71	9	12	2.2
	5	212	49	23	88	10	11	2.4
	20	213	45	21	93	4	4	2.3
20	258	37	14	121	9	7	2.1	



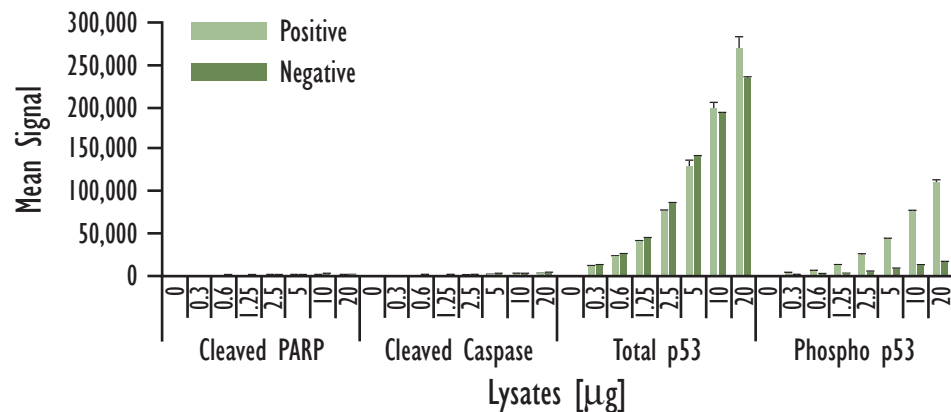
Logarithmically growing Jurkat cells (negative) were treated with etoposide (25 µM; 18hr)(positive). Whole cell lysates were added to MSD MULTI-SPOT 4 Spot plates coated with anti-cleaved PARP (Asp214), anti-cleaved Caspase-3 (Asp175), anti-total p53 and anti-phospho p53 antibodies on the four spatially distinct electrodes per well. Cleaved PARP, cleaved Caspase-3, total p53, and phospho p53 were detected with anti-PARP, anti-Caspase-3 and anti-p53 antibodies labeled with MSD SULFO-TAG reagent.

Kit Size	SI2400	SI6000
1 plate	KI15102D-1	KI11102D-1
5 plates	KI15102D-2	KI11102D-2
20 plates	KI15102D-3	KI11102D-3
20 plates (Base)	KI15102A-3	KI11102A-3

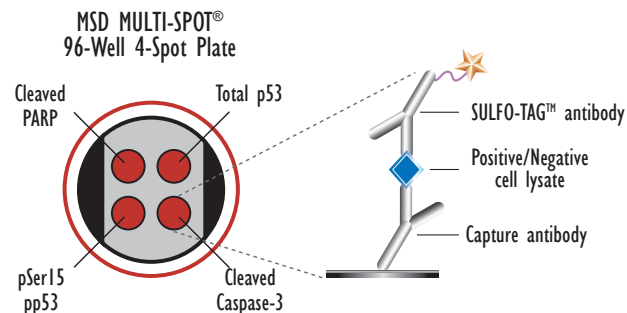


MULTI-SPOT® Apoptosis Panel Assay

Multiplexed Detection of Phosphorylated and Total p53 and Cleaved Caspase-3 and PARP in Whole Cell Lysate Samples



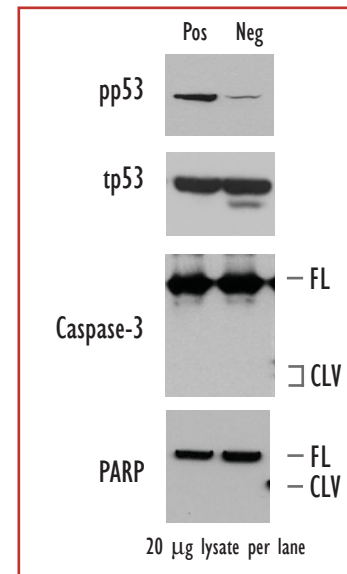
	Lysates (µg)	Positive			Negative			P/N
		Average	StdDev	%CV	Average	StdDev	%CV	
Cleaved PARP	0	74	11	14	79	15	19	
	0.3	338	3	1	473	24	5	0.7
	0.6	510	10	2	754	88	12	0.7
	1.25	627	13	2	919	62	7	0.7
	2.5	930	77	8	1,384	121	9	0.7
	5	1,131	65	6	1,710	132	8	0.7
	10	1,392	139	10	1,964	208	11	0.7
Cleaved Caspase-3	0	46	4	8	50	7	14	
	0.3	273	9	3	390	26	7	0.7
	0.6	457	27	6	646	31	5	0.7
	1.25	607	25	4	880	98	11	0.7
	2.5	960	81	8	1,319	173	13	0.7
	5	1,336	141	11	1,896	189	10	0.7
	10	1,975	52	3	2,473	172	7	0.8
tp53	0	47	9	19	54	17	31	
	0.3	11,357	117	1	12,347	236	2	0.9
	0.6	21,965	602	3	24,519	1247	5	0.9
	1.25	39,540	1,953	5	44,097	1470	3	0.9
	2.5	75,930	1,404	2	84,456	2425	3	0.9
	5	128,996	7,564	6	140,694	713	1	0.9
	10	197,309	7,096	4	192,061	507	0	1.0
pp53	0	36	7	19	47	3	7	
	0.3	3,037	324	11	836	23	3	3.6
	0.6	6,221	328	5	1,568	132	8	4.0
	1.25	12,464	594	5	2,402	60	2	5.2
	2.5	23,293	1,849	8	4,616	509	11	5.0
	5	42,591	1,774	4	8,316	168	2	5.1
	10	75,668	1,267	2	12,872	186	1	5.9
20	110,010	3,671	3	16,155	543	3	6.8	



Growing HT29 cells (negative) were harvested 1 hr after UV irradiation (40 mJ/cm²) (positive). Whole cell lysates were added to MSD MULTI-SPOT 4 Spot plates coated with anti-cleaved Caspase-3 (Asp175), anti-cleaved PARP (Asp214), anti-total p53 and anti-phospho p53 antibodies on the four spatially distinct electrodes per well. Cleaved Caspase-3, cleaved PARP, total p53 and phospho p53 were detected with anti-cleaved Caspase-3, anti-cleaved PARP and anti-total-p53 antibodies labeled with MSD SULFO-TAG reagent.

Kit Size	SI2400	SI6000
1 plate	KI15102D-1	KI11102D-1
5 plates	KI15102D-2	KI11102D-2
20 plates	KI15102D-3	KI11102D-3
20 plates (Base)	KI15102A-3	KI11102A-3

Traditional Western



MSD Experimental

