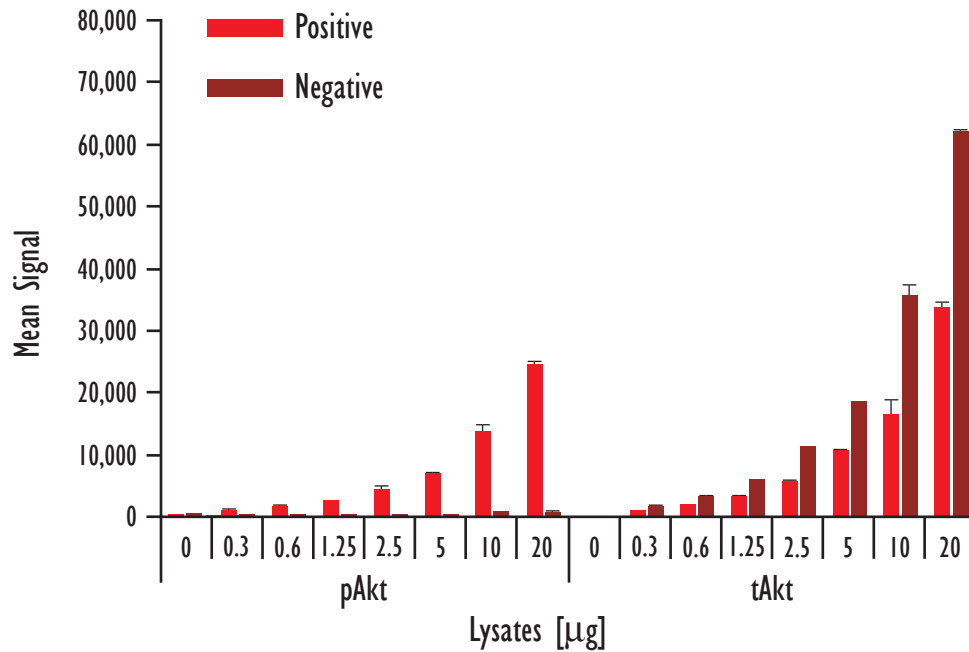
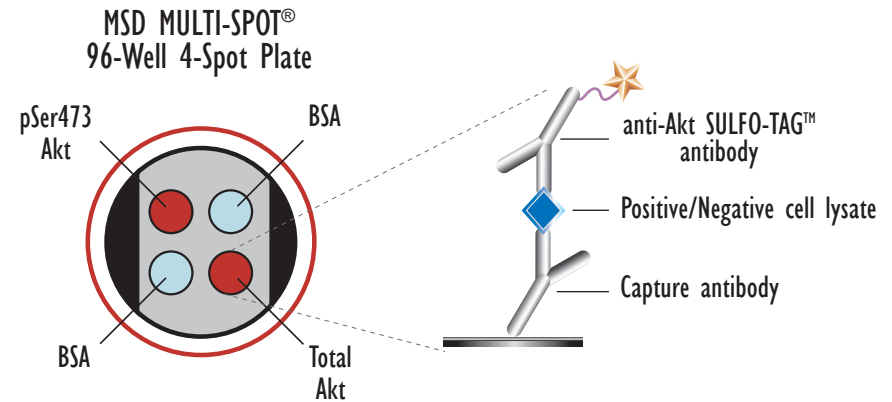


MULTI-SPOT[®] Phospho-(Ser 473), Total Akt Assay

Multiplexed Detection of Phosphorylated and Total Akt in Whole Cell Lysate Samples

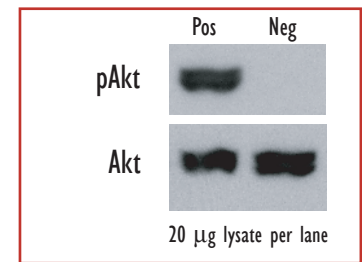


	Lysates (µg)	pAkt Positive			pAkt Negative			P/N
		Average	StdDev	%CV	Average	StdDev	%CV	
pAkt	0	368	122	33	286	54	19	
	0.3	1,659	118	7	304	46	15	5.5
	0.6	2,598	297	11	396	23	6	6.6
	1.25	3,908	139	4	392	14	3	10.0
	2.5	6,875	935	14	543	18	3	12.7
	5	10,724	933	9	676	39	6	15.9
	10	22,151	1,760	8	849	113	13	26.1
	20	39,455	761	2	1,239	103	8	31.8
tAkt	0	109	10	9	101	8	8	
	0.3	1,462	57	4	2,737	107	4	0.5
	0.6	2,843	131	5	5,092	230	5	0.6
	1.25	5,070	300	6	9,407	239	3	0.5
	2.5	9,114	337	4	17,709	86	0	0.5
	5	16,738	811	5	29,691	51	0	0.6
	10	26,538	3,884	15	57,072	3,114	5	0.5
	20	54,182	1,457	3	99,970	593	1	0.5

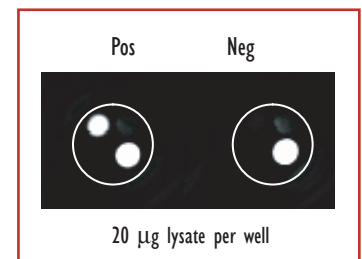


Logarithmically growing Jurkat cells (positive) were treated with LY294002 (50 µM; 2.25 hr) (negative). Whole cell lysates were added to MSD MULTI-SPOT 4-Spot plates coated with anti-phospho-Akt antibody and anti-total-Akt antibody on two of the four spatially distinct electrodes per well. Phosphorylated and total Akt were detected with anti-total-Akt antibody labeled with MSD SULFO-TAG reagent.

Traditional Western



MSD Experimental



Kit Size	SI2400	SI6000
1 plate	K15100D-1	K11100D-1
5 plates	K15100D-2	K11100D-2
20 plates	K15100D-3	K11100D-3
20 plates (Base)	K15100A-3	K11100A-3



Meso Scale Discovery
A Division of Meso Scale Diagnostics, LLC.
www.meso-scale.com