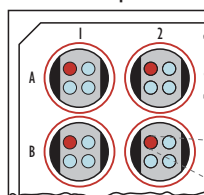
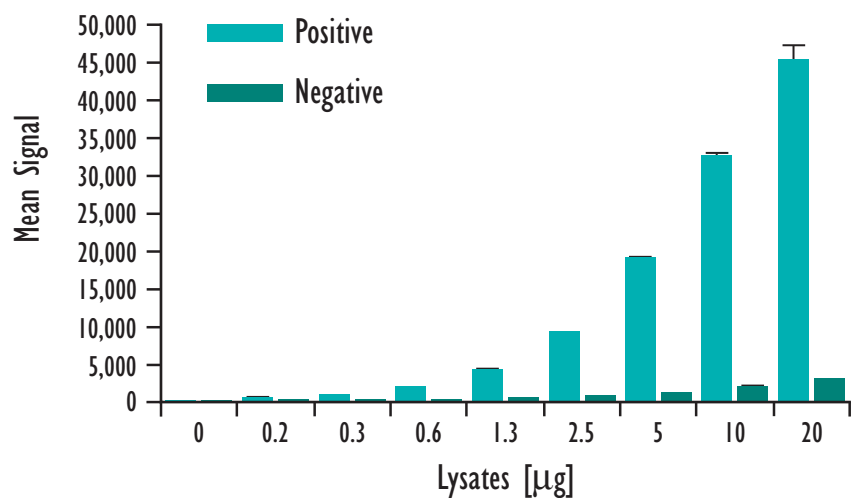
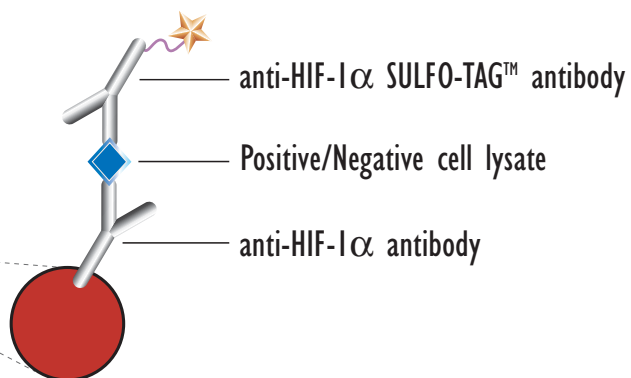


Detection of HIF-1 α

MSD MULTI-SPOT[®]
96-Well 4-Spot Plate

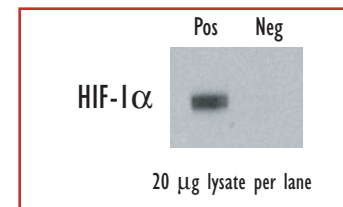


BSA

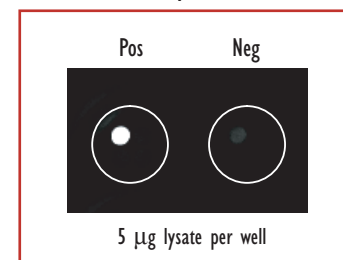


Lysates (μg)	HIF-1 α Positive			HIF-1 α Negative			P/N
	Average	StdDev	%CV	Average	StdDev	%CV	
0	124	13	10	115	12	10	
0.2	597	51	9	144	14	10	4.1
0.3	1,035	51	5	185	8	4	5.6
0.6	2,028	81	4	272	19	7	7.5
1.3	4,296	119	3	396	21	5	10.8
2.5	9,186	137	1	672	58	9	13.7
5	18,904	362	2	1,192	101	8	15.9
10	32,609	456	1	1,937	318	16	16.8
20	45,190	2,185	5	2,975	124	4	15.2

Traditional Western



MSD Experimental



Confluent HeLa cells (negative) were treated with CoCl_2 (150 $\mu\text{g}/\text{mL}$; 16 hr)(positive). Whole cell lysates were added to MSD MULTI-SPOT 4-Spot plates coated with anti-total-HIF-1 α antibody on one of the four spatially distinct electrodes per well. Total HIF-1 α was detected with anti-total-HIF-1 α antibody labeled with MSD SULFO-TAG reagent.



Meso Scale Discovery

A division of Meso Scale Diagnostics, LLC.
www.mesoscale.com