

Diabetes and Obesity Related Assay Applications from Meso Scale Discovery®

Metabolic Markers

Adiponectin (human, mouse, rat)	GLP-1 (7-36)amide (human, mouse/rat)
Ghrelin (mouse/rat)	Glucagon (human/mouse/rat)
Active GLP-1 (human/mouse/rat)	Insulin (human, mouse/rat)
Active GLP-1 (7-36)amide (human, mouse/rat)	Leptin (human, mouse, rat)
Total GLP-1 (human/mouse/rat)	Resistin (mouse/rat)

Multiplex Kits

GLP-1(7-36)amide, Insulin, Glucagon (human, mouse/rat)	Active GLP-1(7-36)amide, Insulin, Glucagon (mouse/rat)
Leptin, Insulin (human, mouse, rat)	Active GLP-1, Insulin, Glucagon (mouse/rat)
Glucagon, Insulin (mouse/rat)	Active GLP-1 (7-36)amide, Insulin, Glucagon, Leptin (human)
	Active GLP-1, Insulin, Glucagon, Leptin (human)

Representative Cytokine Markers

IFN- γ (human, mouse, rat)	IL-10 (human, mouse, rat)
IL-1 β (human, mouse, rat)	IL-12p70 (human, mouse)
IL-2 (human, mouse)	KC/GRO/CINC (mouse, rat)
IL-4 (human, mouse, rat)	IL-13 (human, rat)
IL-5 (human, mouse, rat)	TNF- α (human, mouse, rat)
IL-6 (human, mouse, rat)	MCP-1 (human, mouse, rat)
IL-8 (human)	M-CSF (human)

Multiplex Kit

TH1/TH2 10-plex
(IFN- γ , IL-1 β , IL-2, IL-4, IL-5, IL-8, IL-10, IL-12p70, IL-13, TNF- α) (human)

TH1/TH2 9-plex
(IFN- γ , IL-1 β , IL-2, IL-4, IL-5, KC/GRO/CINC, IL-10, IL-12 total, TNF- α) (mouse)

Pro-Inflammatory 9-Plex
(GM-CSF, IFN- γ , IL-1 β , IL-2, IL-6, IL-8, IL-10, IL-12p70, TNF- α) (human)

Pro-Inflammatory 7-Plex
(IFN- γ , IL-1 β , IL-6, IL-10, IL-12p70, KC/GRO/CINC, TNF- α) (mouse)

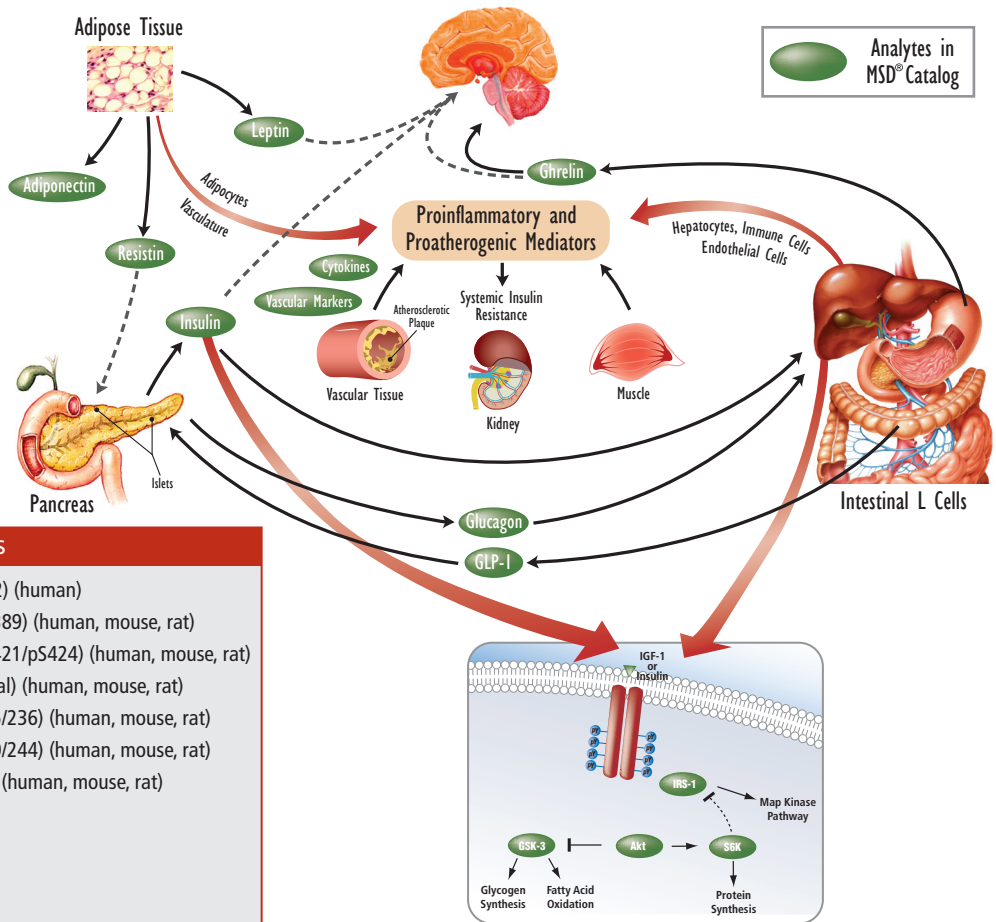
Representative Vascular Injury Markers

CRP (human)	P-Selectin (human)
E-Selectin (human)	SAA (human)
ICAM-1 (human)	Thrombomodulin (human)
I-CAM-3 (human)	VCAM-1 (human)

Multiplex Kits

Vascular Injury Panel I
(Thrombomodulin, ICAM-3, E-Selectin, P-Selectin) (human)

Vascular Injury panel II
(SAA, CRP, VCAM-1, ICAM-1) (human)



Representative Intracellular Signaling Markers

Akt (pS473) (human, mouse, rat)	IRS-1 (pS312) (human)
Akt (pT308) (human, mouse)	p70S6K (pT389) (human, mouse, rat)
Akt (Total) (human, mouse, rat)	p70S6K (pT421/pS424) (human, mouse, rat)
GSK-3 α (pS21) (human)	p70S6K (Total) (human, mouse, rat)
GSK-3 β (pS9) (human, mouse, rat)	S6RP (pS235/236) (human, mouse, rat)
GSK-3 β (Total) (human, mouse, rat)	S6RP (pS240/244) (human, mouse, rat)
	S6RP (Total) (human, mouse, rat)

Multiplex Kits

Akt (pS473), Total Akt (human, mouse, rat)

GSK-3 β (pS9), Total GSK-3 β (human, mouse, rat)

p70S6K (pT421/pS424), Total p70S6K (human, mouse, rat)

Akt signaling Panel (Phospho Protein) (pAkt, p70S6K, pGSK-3 β) (human, mouse, rat)

Akt signaling Panel (Total Protein) (Akt, p70S6K, GSK-3 β) (human, mouse, rat)

Insulin Signaling Panel (Phospho Protein) (pIR, pIRS-1, pIGF-1R) (human)

Insulin Signaling Panel (Total Protein) (IR, IRS-1, IGF-1R) (human)

For Research Use Only. Not for use in diagnostic procedures.

COMING SOON!

- C-peptide (human, rat)
- FasL (human)
- sFas (human)
- Resistin (human)
- sRAGE (human, mouse, rat)
- Total PAI-1 (human, mouse)
- Total PYY (human, mouse)
- Adiponectin, Resistin (mouse)

Diabetes and Obesity Related Assay Applications from Meso Scale Discovery®

Ordering Information for Metabolic Assays

Metabolic Assays	Description	Catalog Numbers
Adiponectin	Human Adiponectin (1 Plate)	K151BXC-1
	Human Adiponectin (5 Plate)	K151BXC-2
	Mouse Adiponectin (1 Plate)	K152BXC-1
	Mouse Adiponectin (5 Plate)	K152BXC-2
	Rat Adiponectin (1 Plate)	K153BXC-1
	Rat Adiponectin (5 Plate)	K153BXC-2
Ghrelin	Mouse/Rat Total Ghrelin (1 Plate)	K15010C-1
	Mouse/Rat Total Ghrelin (5 Plate)	K15010C-2
GLP-1 (7-36)amide	Human GLP-1 (7-36)amide (1 Plate)	K151FAC-1
	Human GLP-1 (7-36)amide (5 Plate)	K151FAC-2
	Mouse/Rat GLP-1 (7-36)amide (1 Plate)	K150FAC-1
	Mouse/Rat GLP-1 (7-36)amide (5 Plate)	K150FAC-2
Active GLP-1	Human Active GLP-1 (1 Plate)	K151HZC-1
	Human Active GLP-1 (5 Plate)	K151HZC-2
	Mouse/Rat Active GLP-1 (1 Plate)	K150HZC-1
	Mouse/Rat Active GLP-1 (5 Plate)	K150HZC-2
Active GLP-1 (7-36)amide	Human Active GLP-1 (7-36)amide (1 Plate)	K151HYC-1
	Human Active GLP-1 (7-36)amide (5 Plate)	K151HYC-2
	Mouse/Rat Active GLP-1 (7-36)amide (1 Plate)	K150HYC-1
	Mouse/Rat Active GLP-1 (7-36)amide (5 Plate)	K150HYC-2
Total GLP-1	Human Total GLP-1 (1 Plate)	K151FCC-1
	Human Total GLP-1 (5 Plate)	K151FCC-2
	Mouse/Rat Total GLP-1 (1 Plate)	K150FCC-1
	Mouse/Rat Total GLP-1 (5 Plate)	K150FCC-2
Glucagon	Human Glucagon (1 Plate)	K151HCC-1
	Human Glucagon (5 Plate)	K151HCC-2
	Mouse/Rat Glucagon (1 Plate)	K150HCC-1
	Mouse/Rat Glucagon (5 Plate)	K150HCC-2
Insulin	Human Insulin (1 Plate)	K151BZC-1
	Human Insulin (5 Plate)	K151BZC-2
	Mouse/Rat Insulin (1 Plate)	K152BZC-1
	Mouse/Rat Insulin (5 Plate)	K152BZC-2
Leptin	Human Leptin (1 Plate)	K151BYC-1
	Human Leptin (5 Plate)	K151BYC-2
	Mouse Leptin (1 Plate)	K152BYC-1
	Mouse Leptin (5 Plate)	K152BYC-2
	Rat Leptin (1 Plate)	K153BYC-1
	Rat Leptin (5 Plate)	K153BYC-2
Resistin	Mouse/Rat Resistin (1 Plate)	K152FNC-1
	Mouse/Rat Resistin (5 Plate)	K152FNC-2

Metabolic Multiplex Assays	Description	Catalog Numbers
GLP-1(7-36)amide, Insulin, Glucagon	Human GLP-1 (7-36)amide, Insulin, Glucagon (1 Plate)	K15160C-1
	Human GLP-1 (7-36)amide, Insulin, Glucagon (5Plate)	K15160C-2
	Mouse/Rat GLP-1 (7-36)amide, Insulin, Glucagon (1 Plate)	K15159C-1
	Mouse/Rat GLP-1 (7-36)amide, Insulin, Glucagon (5Plate)	K15159C-2
Leptin, Insulin	Human Leptin, Insulin (1 Plate)	K15164C-1
	Human Leptin, Insulin (5 Plate)	K15164C-2
	Mouse Metabolic (1 Plate)	K15124C-1
	Mouse Metabolic (5 Plate)	K15124C-2
	Rat Leptin, Insulin (1 Plate)	K15158C-1
	Rat Leptin, Insulin (5 Plate)	K15158C-2
Glucagon, Insulin	Mouse/Rat Insulin, Glucagon (1 Plate)	K15145C-1
	Mouse/Rat Insulin, Glucagon (5 Plate)	K15145C-2
Active GLP-1(7-36)amide, Insulin, Glucagon	Mouse/Rat Active GLP-1 (7-36)amide, Insulin, Glucagon (1 Plate)	K15172C-1
	Mouse/Rat Active GLP-1 (7-36)amide, Insulin, Glucagon (5 Plate)	K15172C-2
Active GLP-1, Insulin, Glucagon	Mouse/Rat Active GLP-1, Insulin, Glucagon (1 Plate)	K15171C-1
	Mouse/Rat Active GLP-1, Insulin, Glucagon (5 Plate)	K15171C-2
Active GLP-1(7-36)amide, Insulin, Glucagon, Leptin	Human Active GLP-1 (7-36)amide, Insulin, Glucagon, Leptin (1 Plate)	K15173C-1
	Human Active GLP-1 (7-36)amide, Insulin, Glucagon, Leptin (5 Plate)	K15173C-2
Active GLP-1, Insulin, Glucagon, Leptin	Human Active GLP-1, Insulin, Glucagon, Leptin (1 Plate)	K15174C-1
	Human Active GLP-1, Insulin, Glucagon, Leptin (5 Plate)	K15174C-2

For Research Use Only. Not for use in diagnostic procedures.

Contact Information

Customer Service

Phone: 1-301-947-2085 . Fax: 1-301-990-2776 . Email: customerservice@mesoscale.com . Web: www.mesoscale.com

