

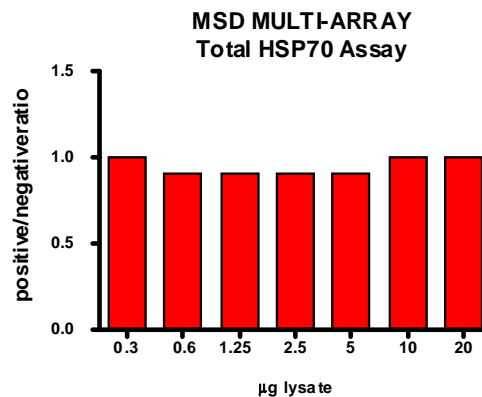
# Meso Scale Discovery® Whole Cell Lysate Set

## Total HSP70

<b>Catalog No:</b>	C11EV-1
<b>Contents:</b>	2 x 100 µg MSDLY0019 Total HSP70 Negative Cell Lysate Cell lysate from growing HeLa cell monolayers  2 x 100 µg MSDLY0020 Total HSP70 Positive Cell Lysate Cell lysate from growing HeLa cell monolayers treated with 0.4 M sorbitol for 30 minutes
<b>Concentration:</b>	2 mg/mL in MSD® Complete Tris Lysis Buffer
<b>Volume:</b>	2 vials (50 µL) negative lysate    2 vials (50 µL) positive lysate
<b>Preparation:</b>	Following cell treatment, HeLa cell lysates were prepared on ice in MSD Complete Tris Lysis Buffer. Cell debris was cleared by centrifugation.
<b>Storage:</b>	Lysates should be stored at -80°C. Lysates will retain approximately 90% of activity after a single round of freeze thaw if handled properly (thawed on ice and immediately refrozen in smaller aliquots).
<b>Quality Control:</b>	Lysates have been tested for performance in Western Blot and MSD MULTI-ARRAY® Assays.

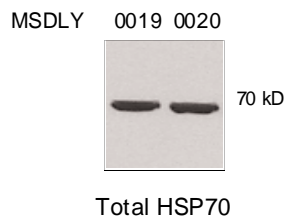
### MSD MULTI-ARRAY Assay Results

The figure below illustrates typical lysate titrations for MSDLY0019 (HSP70 negative) and MSDLY0020 (HSP70 positive) cell lysates using the MSD MULTI-ARRAY Total HSP70 Whole Cell Lysate Kit. The results are presented as a ratio of the signals obtained with HSP70 positive and HSP70 negative lysates. The signal ratios for total HSP70 remain at a constant level close to one throughout the titration. The representative results shown below are for demonstration purposes only and individual results may vary depending upon experimental application.



### Traditional Western Blot Results

MSDLY0019 and MSDLY0020 whole cell lysates (20 µg each) were analyzed by Western Blot with a total HSP70 antibody.



FOR RESEARCH USE ONLY. NOT FOR USE IN DIAGNOSTIC OR THERAPEUTIC PROCEDURES.

20203-v1-2010Feb