

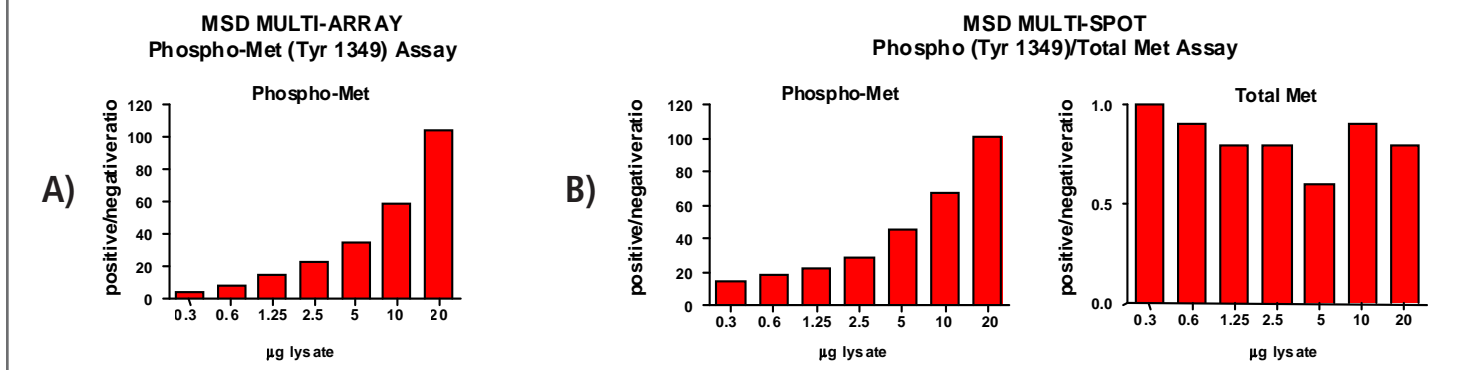
Meso Scale Discovery® Whole Cell Lysate Set

Phospho-Met (Tyr 1349)

| | |
|-------------------------|--|
| Catalog No: | C11DL-1 |
| Contents: | 2 x 100 µg MSDLY0037 pMet Negative Control Cell Lysate Cell lysate from growing HeLa cell monolayers 2 x 100 µg MSDLY0038 pMet Positive Control Cell Lysate Cell lysate from growing HeLa cell monolayers pretreated with 1 mM sodium vanadate for 4 hours followed by HGF treatment (200 ng/mL) for 5 minutes to stimulate Met phosphorylation |
| Concentration: | 2 mg/mL in MSD® Complete Tris Lysis Buffer |
| Volume: | 2 vials (50 µL) negative lysate 2 vials (50 µL) positive lysate |
| Preparation: | Following cell treatment, HeLa cell lysates were prepared on ice in MSD Complete Tris Lysis Buffer. Cell debris was cleared by centrifugation. |
| Storage: | Lysates should be stored at -80°C. Lysates will retain approximately 90% of activity after a single round of freeze thaw if handled properly (thawed on ice and immediately refrozen in smaller aliquots). |
| Quality Control: | Lysates have been tested for performance in Western Blot and MSD Assays. |

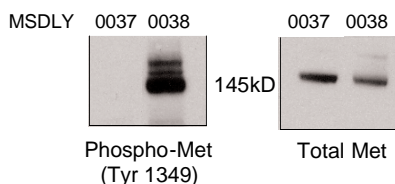
MSD MULTI-SPOT® Assay Results

Figures A and B (below) illustrate typical titrations for MSDLY0037 (pMet negative) and MSDLY0038 (pMet positive) cell lysates. Figure A depicts the MSD MULTI-ARRAY® Phospho-Met (Tyr 1349) Whole Cell Lysate Kit; Figure B depicts the MSD MULTI-SPOT Phospho (Tyr 1349)/ Total Met Whole Cell Lysate Kit. The results are presented as a ratio of the signals obtained with pMet positive and pMet negative lysates. In both assays, the phospho-Met signal ratios increase with the amount of lysates. The signal ratios for total Met in the Phospho/Total Met Assay remain at a constant level close to one throughout the titration. The representative results shown below are for demonstration purposes only and individual results may vary depending upon experimental application.



Traditional Western Blot Results

MSDLY0037 and MSDLY0038 whole cell lysates (20 µg each) were analyzed by Western Blot with Phospho (Tyr 1349) -specific and Total Met antibodies.



FOR RESEARCH USE ONLY. NOT FOR USE IN DIAGNOSTIC OR THERAPEUTIC PROCEDURES.

20198-v1-2010Feb