

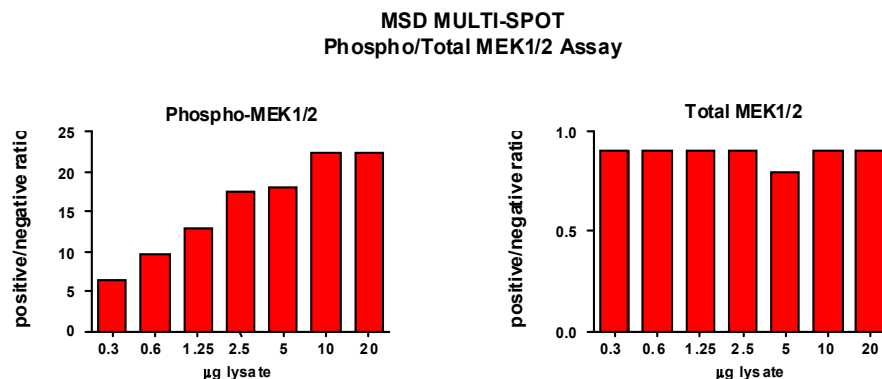
Meso Scale Discovery® Whole Cell Lysate Set

Phospho-MEK1/2

Catalog No:	C11CW-1
Contents:	2 x 100 µg MSDLY0004 pMEK1/2 Negative Control Cell Lysate Cell lysate from growing Jurkat cells treated with 50 µM LY294002 for 2.5 hours 2 x 100 µg MSDLY0003 pMEK1/2 Positive Control Cell Lysate Cell lysate from growing Jurkat cells treated with 200 nM PMA for 15 minutes to stimulate MEK1/2 phosphorylation
Concentration:	2 mg/mL in MSD® Complete Tris Lysis Buffer
Volume:	2 vials (50 µL) negative lysate 2 vials (50 µL) positive lysate
Preparation:	Following cell treatment, Jurkat cell lysates were prepared on ice in MSD Complete Tris Lysis Buffer. Cell debris was cleared by centrifugation.
Storage:	Lysates should be stored at -80°C. Lysates will retain approximately 90% of activity after a single round of freeze thaw if handled properly (thawed on ice and immediately refrozen in smaller aliquots).
Quality Control:	Lysates have been tested for performance in Western Blot and MSD MULTI-SPOT® Assays.

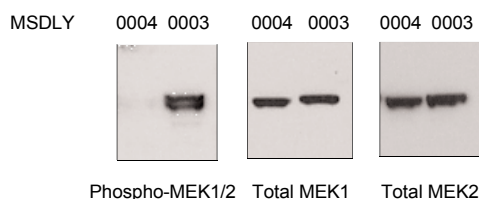
MSD MULTI-SPOT Assay Results

The figure below illustrates a typical titration for MSDLY0004 (pMEK1/2 negative) and MSDLY0003 (pMEK1/2 positive) cell lysates with the MSD MULTI-SPOT Phospho/Total MEK1/2 Whole Cell Lysate Kit. The results are presented as a ratio of the signals obtained with pMEK1/2 positive and pMEK1/2 negative lysates. The phospho-MEK1/2 signal ratios increase with the amount of lysates, and the signal ratios for total MEK1/2 remain at a constant level close to one throughout the titration. The representative results shown below are for demonstration purposes only and individual results may vary depending upon experimental application.



Traditional Western Blot Results

MSDLY0004 and MSDLY0003 whole cell lysates (20 µg each) were analyzed by Western Blot with phospho-specific MEK1/2 and total MEK 1 and MEK 2 antibodies.



FOR RESEARCH USE ONLY. NOT FOR USE IN DIAGNOSTIC OR THERAPEUTIC PROCEDURES.

20050-v1-2008May