

Meso Scale Discovery® Whole Cell Lysate Set

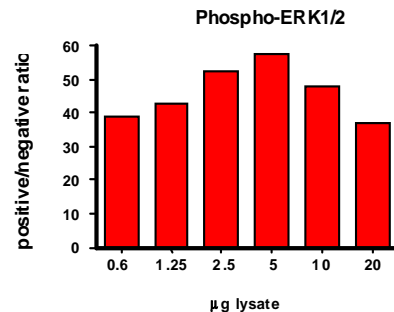
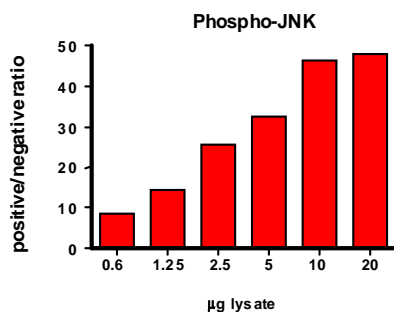
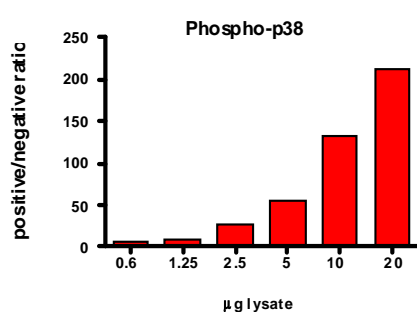
Phospho-MAPK

Catalog No:	C1101-1
Contents:	2 x 100 µg MSDLY0021 pp38/ pJNK/ pERK1/2 Negative Control Cell Lysate Cell lysate from growing Jurkat cells treated with 1 µM rapamycin for 3 hours to inhibit phosphorylation 2 x 100 µg MSDLY0052 pp38/ pJNK/ pERK1/2 Positive Control Cell Lysate Cell lysate from growing Jurkat cells teated with 50 nM calyculin A and 200 nM PMA for 30 minutes to stimulate phosphorylation
Concentration:	2 mg/mL in MSD® Complete Tris Lysis Buffer
Volume:	2 vials (50 µL) negative lysate 2 vials (50 µL) positive lysate
Preparation:	Following cell treatment, Jurkat cell lysates were prepared on ice in MSD Complete Tris Lysis Buffer. Cell debris was cleared by centrifugation.
Storage:	Lysates should be stored at -80°C. Lysates will retain approximately 90% of activity after a single round of freeze thaw if handled properly (thawed on ice and immediately refrozen in smaller aliquots).
Quality Control:	Lysates have been tested for performance in Western Blot and MSD MULTI-SPOT® Assays.

MSD MULTI-SPOT Assay Results

The figures below illustrate typical titrations for MSDLY0021 (negative) and MSDLY0052 (positive) cell lysates with the MSD MULTI-SPOT MAP Kinase Whole Cell Lysate Kit Version 1. Results are presented as a ratio of the signals obtained with positive and negative lysates. In the MAP Kinase multiplex assay, the signal ratios for pp38, pJNK, and pERK1/2 all increase with the amount of lysates. The representative results shown below are for demonstration purposes only and individual results may vary depending upon experimental application.

MSD MULTI-SPOT MAP Kinase Multiplex Assay



Traditional Western Blot Results

MSDLY0021 and MSDLY0052 whole cell lysates (20 µg each) were analyzed by Western Blot with phospho-specific p38 (Thr180/Tyr182), JNK (Thr183/Tyr185) and ERK1/2 (Thr202/Tyr204) antibodies.

