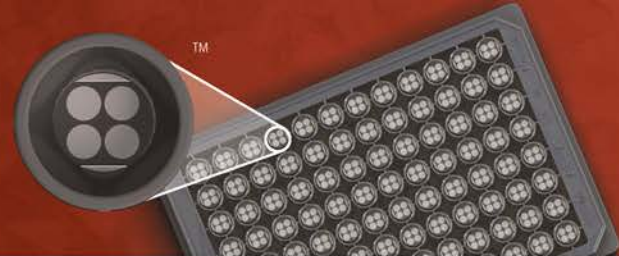


MSD[®] Phospho-FRS2 (Tyr196/436) Whole Cell Lysate Set



Ordering information

MSD Customer Service
Phone: 1-301-947-2085
Fax: 1-301-990-2776
Email: CustomerService@mesoscale.com

Scientific support

Phone: 1-301-947-2025
Email: ScientificSupport@mesoscale.com

Company Address

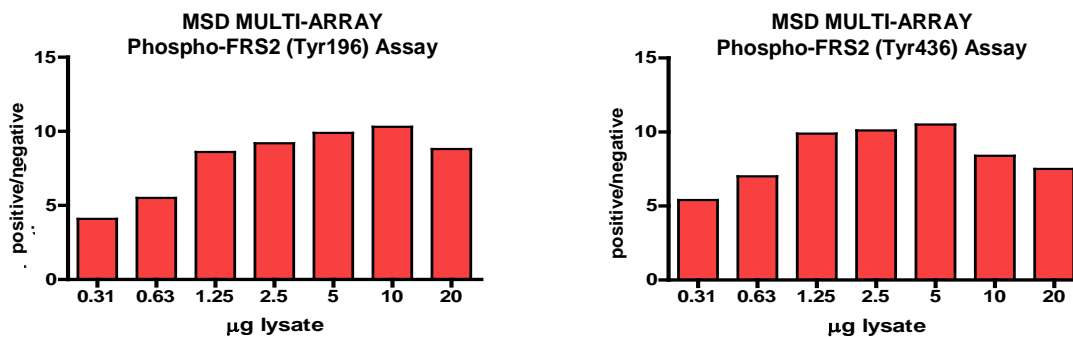
MESO SCALE DISCOVERY[®]
A division of
Meso Scale Diagnostics, LLC.
9238 Gaither Road
Gaithersburg, MD 20877 USA

www.mesoscale.com[®]

Catalog No	C10KI-1
Contents	2 x 100 µg MSDLY0026 Phospho-FRS2 negative cell lysate Cell lysate from serum-deprived NIH3T3 cells 2 x 100 µg MSDLY0082 Phospho-FRS2 positive cell lysate Cell lysate from serum-deprived NIH3T3 cells treated with 100 ng/mL FGF for 5 minutes to stimulate FRS2 phosphorylation
Concentration	2 mg/mL in MSD complete lysis buffer
Volume	2 vials (50 µL) negative lysate 2 vials (50 µL) positive lysate
Preparation	Following cell treatment, NIH3T3 cell lysates were prepared on ice in MSD complete lysis buffer. Cell debris was cleared by centrifugation.
Storage	Lysates should be stored at ≤-70°C and thawed on ice for a limited amount of time prior to use. Once diluted, any unused lysates should be discarded. If desired, lysates can be separated into single use aliquots and promptly refrozen at ≤-70°C. The performance of the refrozen material should be determined by the user for each target.
Quality Control	Lysates have been tested for performance in Western blot and MSD MULTI-ARRAY [®] assays.

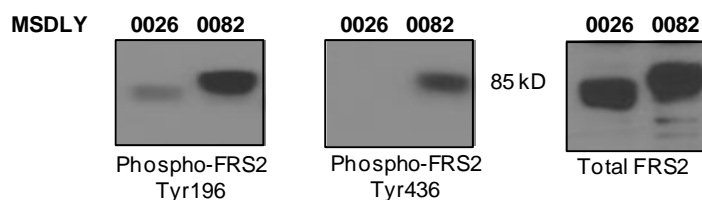
MSD MULTI-ARRAY Assay Results

The figure below illustrates typical lysate titrations for MSDLY0026 (negative) and MSDLY0082 (positive) using the MSD MULTI-ARRAY Phospho-FRS2 (Tyr196 and Tyr436) Whole Cell Lysate Kits. The results are presented as a ratio of the signals obtained with positive phospho-FRS2 and negative phospho-FRS2 lysates. The phospho-FRS2 signal ratios increase with increasing amounts of lysate. The representative results shown below are for demonstration purposes only; individual results may vary depending upon experimental application.



Traditional Western Blot Results

MSDLY0026 and MSDLY0082 whole cell lysates (20 µg each) were analyzed by Western blot with phospho-specific FRS2 (Tyr196 and Tyr436), and total FRS2 antibodies.



For Research Use Only.
Not for use in diagnostic procedures.

MESO SCALE DISCOVERY, MESO SCALE DIAGNOSTICS, WWW.MESOSCALE.COM, MSD, MSD (DESIGN), DISCOVERY WORKBENCH, QUICKPLEX, MULTI-ARRAY, MULTI-SPOT, SULFO-TAG, SECTOR, SECTOR HTS, SECTOR PR, 4-SPOT (DESIGN) and SPOT THE DIFFERENCE are trademarks and/or service marks of Meso Scale Diagnostics, LLC. © 2011 Meso Scale Diagnostics, LLC. All rights reserved.



www.mesoscale.com[®]

20240-v1-20110ct