

MSD[®] Phospho-FOXO3a (Thr32) Whole Cell Lysate Set



Ordering information

MSD Customer Service
Phone: 1-301-947-2085
Fax: 1-301-990-2776
Email: CustomerService@mesoscale.com

Scientific support

Phone: 1-301-947-2025
Email: ScientificSupport@mesoscale.com

Company Address

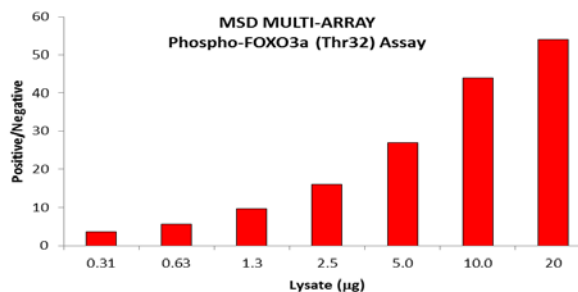
MESO SCALE DISCOVERY[®]
A division of
Meso Scale Diagnostics, LLC.
9238 Gaither Road
Gaithersburg, MD 20877 USA

www.mesoscale.com[®]

Catalog No	C10KK-1
Contents	2 x 100 µg MSDLY0066 Phospho-FOXO3a (Thr32) negative cell lysate Cell lysate from MCF-7 cells treated with 50 µM LY294002 for 2.5 hours 2 x 100 µg MSDLY0067 Phospho-FOXO3a (Thr32) positive cell lysate Cell lysate from MCF-7 cells treated with 100 nM IGF-1 for 20 minutes to stimulate phosphorylation
Concentration	2 mg/mL in MSD complete lysis buffer
Volume	2 vials (50 µL) negative lysate 2 vials (50 µL) positive lysate
Preparation	Following cell treatment, MCF-7 cell lysates were prepared on ice in MSD complete lysis buffer. Cell debris was cleared by centrifugation.
Storage	Lysates should be stored at ≤-70°C and thawed on ice for a limited amount of time prior to use. Once diluted, any unused lysates should be discarded. If desired, lysates can be separated into single use aliquots and promptly refrozen at ≤-70°C. The performance of the refrozen material should be determined by the user for each target.
Quality Control	Lysates have been tested for performance in Western blot and MSD MULTI-ARRAY [®] assays.

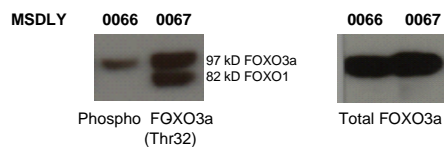
MSD MULTI-ARRAY Assay Results

The figure below illustrates typical lysate titrations for MSDLY0066 (negative) and MSDLY0067 (positive) using the MSD MULTI-ARRAY Phospho-FOXO3a (Thr32) Whole Cell Lysate Kit. The results are presented as a ratio of the signals obtained with positive phospho-FOXO3a and negative phospho-FOXO3a lysates. The phospho-FOXO3a signal ratios increase with increasing amounts of lysate. The representative results shown below are for demonstration purposes only; individual results may vary depending upon experimental application.



Traditional Western Blot Results

MSDLY0066 and MSDLY0067 whole cell lysates (20 µg each) were analyzed by Western blot with phospho-specific FOXO3a (Thr32), and total FOXO3a antibodies.



For Research Use Only.
Not for use in diagnostic procedures.

MESO SCALE DISCOVERY, MESO SCALE DIAGNOSTICS, WWW.MESOSCALE.COM, MSD, MSD (DESIGN), DISCOVERY WORKBENCH, QUICKPLEX, MULTI-ARRAY, MULTI-SPOT, SULFO-TAG, SECTOR, SECTOR HTS, SECTOR PR, 4-SPOT (DESIGN) and SPOT THE DIFFERENCE are trademarks and/or service marks of Meso Scale Diagnostics, LLC. © 2011 Meso Scale Diagnostics, LLC. All rights reserved.



20241-v1-20110ct

www.mesoscale.com[®]