

# MSD<sup>®</sup> Phospho-4E-BP1 (Thr37/46) Whole Cell Lysate Set



## Ordering information

MSD Customer Service  
Phone: 1-301-947-2085  
Fax: 1-301-990-2776  
Email: CustomerService@mesoscale.com

## Scientific support

Phone: 1-301-947-2025  
Email: ScientificSupport@mesoscale.com

## Company Address

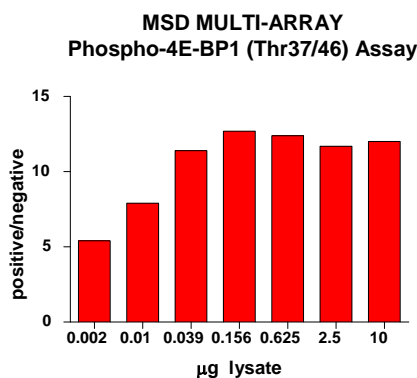
MESO SCALE DISCOVERY<sup>®</sup>  
A division of  
Meso Scale Diagnostics, LLC.  
9238 Gaither Road  
Gaithersburg, MD 20877 USA

[www.mesoscale.com](http://www.mesoscale.com)<sup>®</sup>

<b>Catalog No</b>	C10KH-1
<b>Contents</b>	2 x 100 µg MSDLY0066 Phospho-4E-BP1 (Thr37/46) negative cell lysate Cell lysate from MCF-7 cells treated with 50 µM LY294002 for 2.5 hours to inhibit constitutive phosphorylation  2 x 100 µg MSDLY0067 Phospho-4E-BP1 (Thr37/46) positive cell lysate Cell lysate from MCF-7 cells treated with 100 nM IGF-1 for 20 minutes to stimulate phosphorylation
<b>Concentration</b>	2 mg/mL in MSD complete lysis buffer
<b>Volume</b>	2 vials (50 µL) negative lysate      2 vials (50 µL) positive lysate
<b>Preparation</b>	Following cell treatment, MCF-7 cell lysates were prepared on ice in MSD complete lysis buffer. Cell debris was cleared by centrifugation.
<b>Storage</b>	Lysates should be stored at ≤-70°C and thawed on ice for a limited amount of time prior to use. Once diluted, any unused lysates should be discarded. If desired, lysates can be separated into single use aliquots and promptly refrozen at ≤-70°C. The performance of the refrozen material should be determined by the user for each target.
<b>Quality Control</b>	Lysates have been tested for performance in Western blot and MSD MULTI-ARRAY <sup>®</sup> assays.

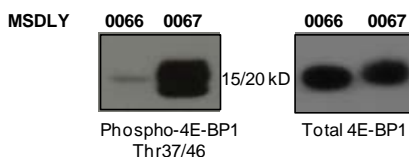
## MSD MULTI-ARRAY Assay Results

The figure below illustrates typical lysate titrations for MSDLY0066 (negative) and MSDLY0067 (positive) using the MSD MULTI-ARRAY Phospho-4E-BP1 (Thr37/46) Whole Cell Lysate Kit. The results are presented as a ratio of the signals obtained with positive phospho-4E-BP1 and negative phospho-4E-BP1 lysates. The phospho-4E-BP1 signal ratios increase with increasing amounts of lysate. The representative results shown below are for demonstration purposes only; individual results may vary depending upon experimental application.



## Traditional Western Blot Results

MSDLY0066 and MSDLY0067 whole cell lysates (20 µg each) were analyzed by Western blot with phospho-specific 4E-BP1 (Thr37/46), and total 4E-BP1 antibodies.



**For Research Use Only.**  
Not for use in diagnostic procedures.

MESO SCALE DISCOVERY, MESO SCALE DIAGNOSTICS, WWW.MESOSCALE.COM, MSD, MSD (DESIGN), DISCOVERY WORKBENCH, QUICKPLEX, MULTI-ARRAY, MULTI-SPOT, SULFO-TAG, SECTOR, SECTOR HTS, SECTOR PR, 4-SPOT (DESIGN) and SPOT THE DIFFERENCE are trademarks and/or service marks of Meso Scale Diagnostics, LLC. © 2011 Meso Scale Diagnostics, LLC. All rights reserved.



20239-v1-20110ct

[www.mesoscale.com](http://www.mesoscale.com)<sup>®</sup>