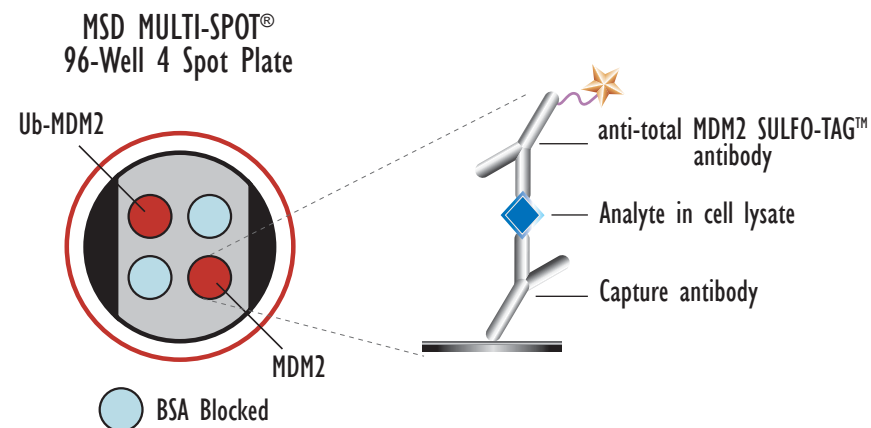
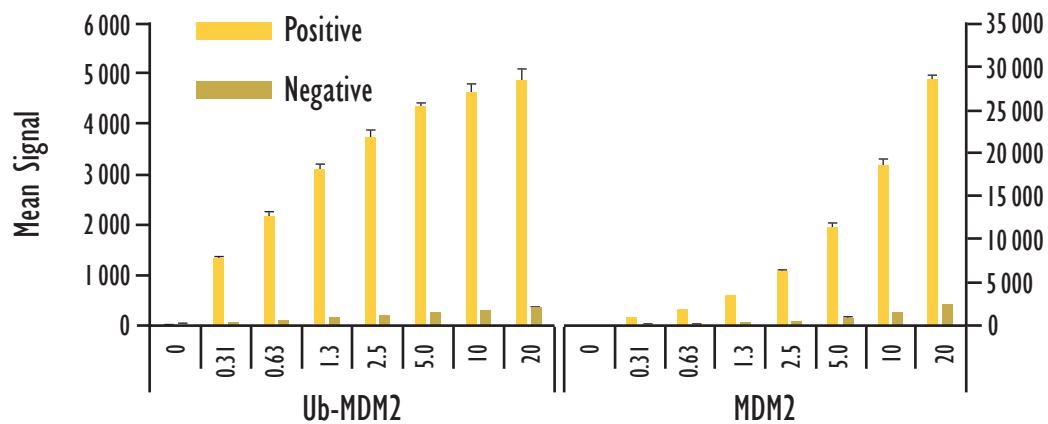


MULTI-SPOT[®] Ubiquitinated and Total MDM2 Assay

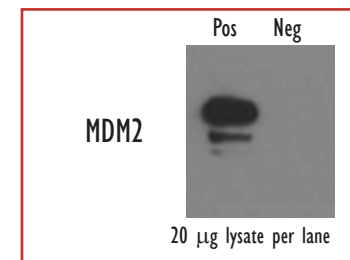
Detection of Ubiquitinated and Total MDM2 in Whole Cell Lysate Samples



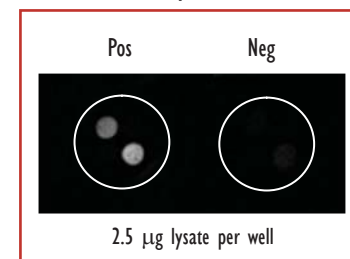
	Lysates (μg)	MDM2 Positive			MDM2 Negative			P/N
		Average	StdDev	%CV	Average	StdDev	%CV	
Ub-MDM2	0	34	3	9	40	1	3	
	0.31	1336	36	3	83	6	7	16
	0.63	2183	84	4	112	3	3	20
	1.3	3092	102	3	161	2	1	19
	2.5	3749	133	4	216	8	3	17
	5.0	4354	46	1	271	3	1	16
	10	4626	154	3	316	9	3	15
	20	4876	223	5	353	11	3	14
MDM2	0	27	1	3	34	3	10	
	0.31	967	25	3	109	4	3	9
	0.63	1778	35	2	172	4	2	10
	1.3	3452	93	3	293	11	4	12
	2.5	6248	131	2	517	18	3	12
	5.0	11387	581	5	904	20	2	13
	10	18580	737	4	1520	5	0	12
	20	28482	625	2	2449	79	3	12

Growing HCT116 cells (negative) were treated with doxorubicin (1 μM, 21 hours) and epoxomicin (1 μM, 6 hours) (positive). Whole cell lysates were added to MSD MULTI-SPOT[®] 4 Spot plates coated with anti-total MDM2 antibody and antibody against ubiquitinated proteins on two of the four spatially distinct electrodes per well. Total and ubiquitinated MDM2 were detected with an anti-total MDM2 antibody labeled with MSD SULFO-TAG reagent.

Traditional Western



MSD Experimental



Kit Size	SI2400	SI6000
1 plate	K15168D-1	K11168D-1
5 plates	K15168D-2	K11168D-2
20 plates	K15168D-3	K11168D-3
20 plates (Base)	K15168A-3	K11168A-3



Meso Scale Discovery[®]
A division of Meso Scale Diagnostics, LLC.
www.mesoscale.com[®]