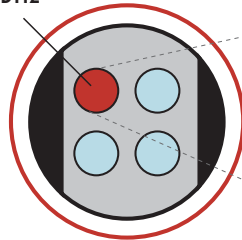


# MULTI-ARRAY<sup>®</sup> Ubiquitinated MDM2 Assay

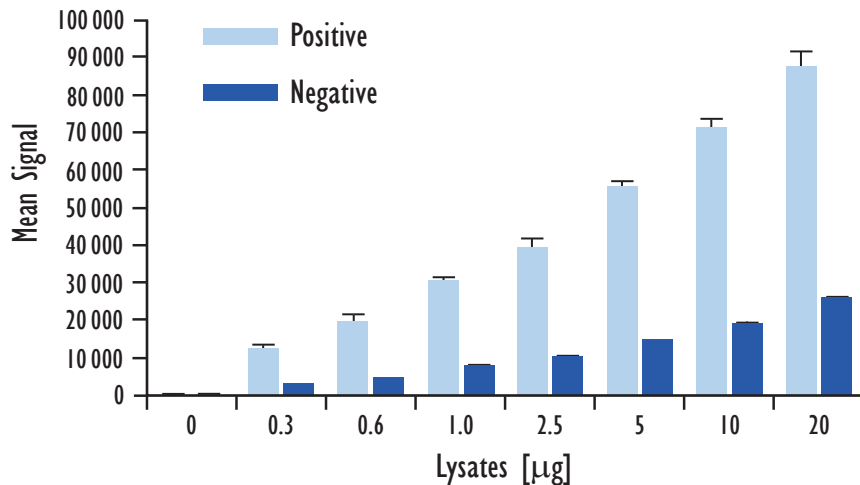
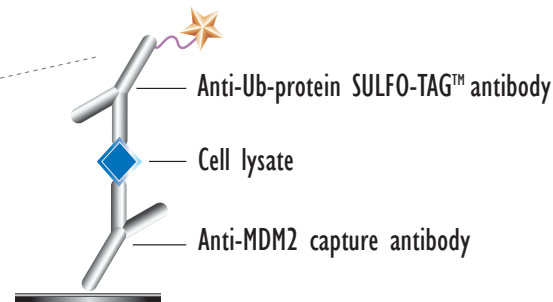
Detection of Directly Ubiquitinated MDM2 & MDM2 in Complexes with Other Ubiquitinated Proteins in Whole Cell Lysate Samples

MSD MULTI-SPOT<sup>®</sup> 96-Well 4 Spot Plate

Ub-MDM2

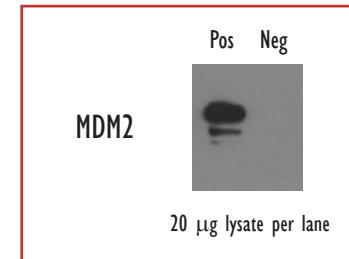


BSA Blocked

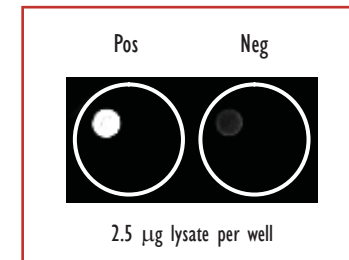


Lysates (µg/well)	Positive			Negative			P/N
	Average	StdDev	%CV	Average	StdDev	%CV	
0	87	10	12	90	5	5	
0.3	12453	1087	9	2976	85	3	4
0.6	19865	1694	9	4912	145	3	4
1.0	30385	1160	4	7529	331	4	4
2.5	39515	1970	5	10302	413	4	4
5	55482	1526	3	14778	84	1	4
10	71281	2045	3	19376	575	3	4
20	87429	3924	4	25794	537	2	3

Traditional Western



MSD Experimental



Growing HCT116 cells (negative) were treated with doxorubicin (1 µM, 21 hours) and epoxomicin (1 µM, 6 hours) (positive). Whole cell lysates were added to MSD MULTI-SPOT<sup>®</sup> 4 Spot plates coated with anti-total MDM2 antibody on one of the four spatially distinct electrodes per well. Ubiquitinated MDM2 as detected with an anti-Ubiquitin antibody labeled with MSD SULFO-TAG reagent.

Kit Size	SI2400	SI6000
1 plate	K152FJD-1	K112FJD-1
5 plates	K152FJD-2	K112FJD-2
20 plates	K152FJD-3	K112FJD-3
20 plates (Base)	K152FJA-3	K112FJA-3