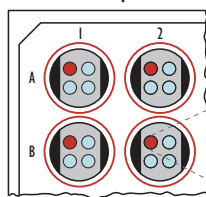


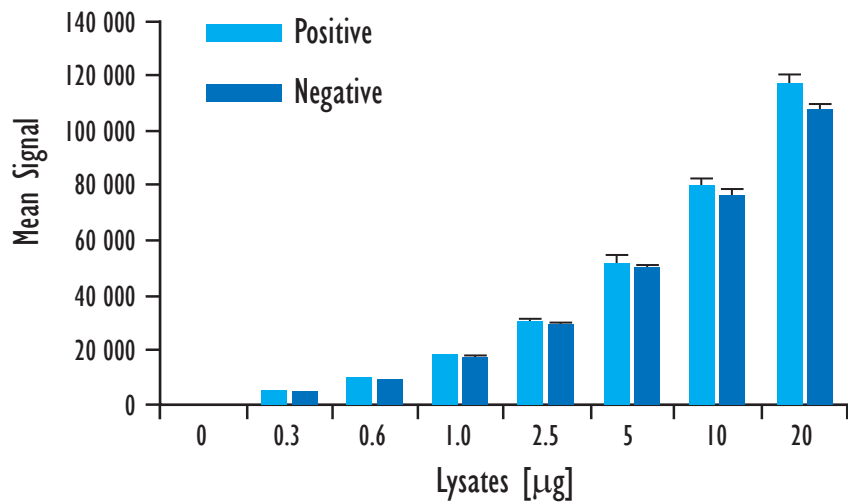
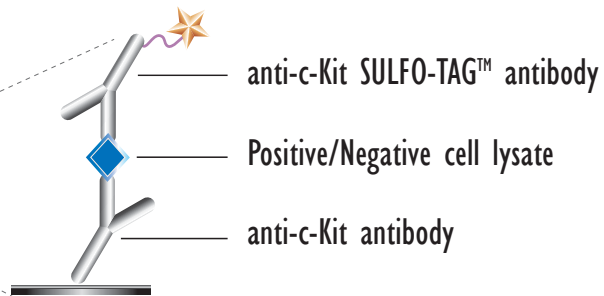
MULTI-ARRAY[®] Total c-Kit Assay

Detection of Total c-Kit in Whole Cell Lysate Samples

MSD MULTI-SPOT[®]
96-Well 4 Spot Plate

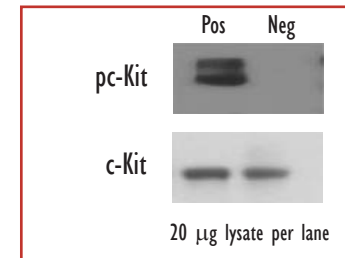


● BSA

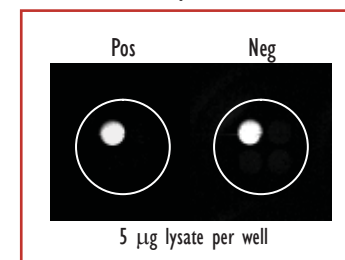


Lysates (µg)	pc-Kit Positive			pc-Kit Negative			P/N
	Average	StdDev	%CV	Average	StdDev	%CV	
0	261	16	6	253	8	3	
0.3	5444	181	3	5118	182	4	1
0.6	9861	493	5	9444	126	1	1
1.0	18141	239	1	17734	347	2	1
2.5	30290	1031	3	29691	544	2	1
5	51427	3304	6	50380	697	1	1
10	80241	2254	3	76996	2008	3	1
20	117036	3707	3	107852	2036	2	1

Traditional Western



MSD Experimental



Growing M07e cells were starved in low serum for 30 min (negative) and treated with SCF (100 ng/mL; 2 min)(positive). Whole cell lysates were added to MSD MULTI-SPOT 4 Spot plates coated with anti-total c-Kit antibody on one of the four spatially distinct electrodes per well. Total c-Kit was detected with anti-total c-Kit antibody labeled with MSD SULFO-TAG reagent.