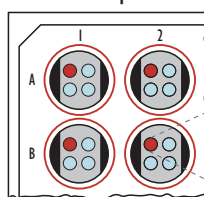


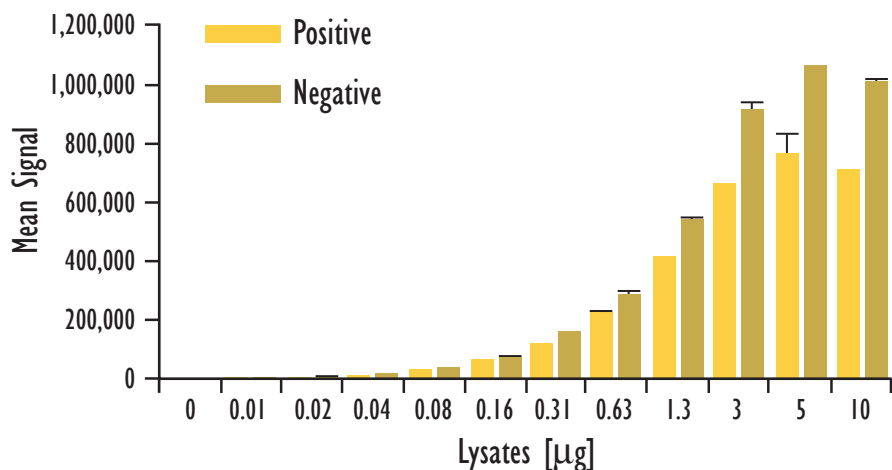
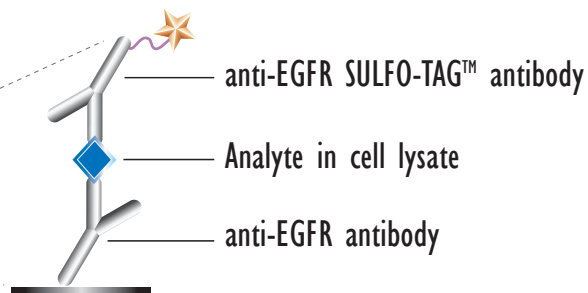
# MULTI-ARRAY<sup>®</sup> Total EGFR Assay

Detection of Total EGFR in Whole Cell Lysate Samples

MSD MULTI-SPOT<sup>®</sup>  
96-Well 4-Spot Plate

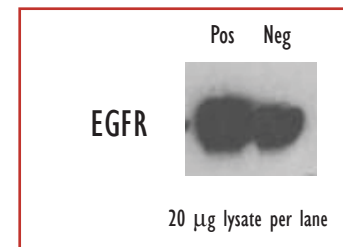


● BSA

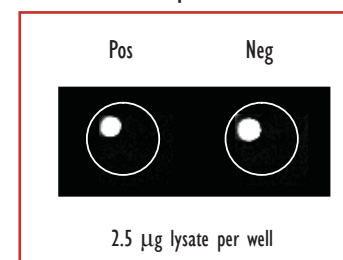


Lysates (µg)	pEGFR Positive			pEGFR Negative			P/N
	Average	StdDev	%CV	Average	StdDev	%CV	
0				184	52	28	
0.01	3,861	18	0	4,958	325	7	0.8
0.02	7,637	180	2	9,914	670	7	0.8
0.04	15,669	236	2	18,656	1,650	9	0.8
0.08	30,948	817	3	39,656	276	1	0.8
0.16	64,429	4,687	7	76,377	2,477	3	0.8
0.31	121,570	292	0	157,668	5,238	3	0.8
0.63	228,249	9,044	4	285,751	19,146	7	0.8
1.3	413,168	675	0	544,371	2,655	0	0.8
3	659,744	7,092	1	914,856	23,540	3	0.7
5	766,507	63,037	8	1,058,852	3,263	0	0.7
10	711,199	1,256	0	1,006,322	14,843	1	0.7

Traditional Western



MSD Experimental



Serum-deprived A431 cells were treated with compound 56 (5 nM; 3 hr) (negative), or with EGF (100 ng/mL; 10 min) (positive). Whole cell lysates were added to MSD MULTI-SPOT 4-Spot plates coated with anti-total-EGFR antibody on one of the four spatially distinct electrodes per well. Total EGFR was detected with an anti-total-EGFR antibody labeled with MSD SULFO-TAG reagent.

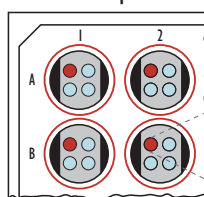
Kit Size	SI2400	SI6000
1 plate	KI51CKD-1	KI11CKD-1
5 plates	KI51CKD-2	KI11CKD-2
20 plates	KI51CKD-3	KI11CKD-3
20 plates (Base)	KI51CKA-3	KI11CKA-3



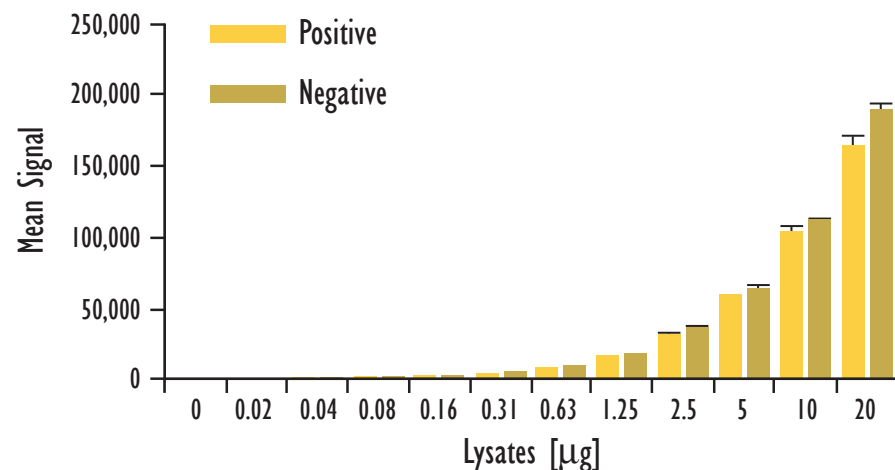
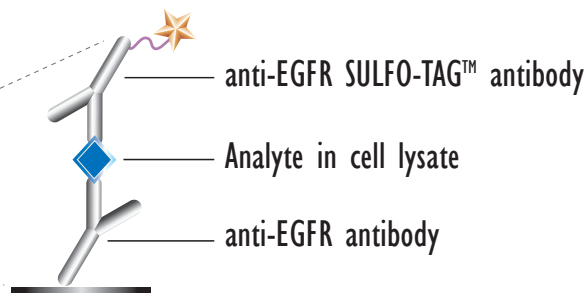
# MULTI-ARRAY<sup>®</sup> Total EGFR Assay

Detection of Total EGFR in Whole Cell Lysate Samples

MSD MULTI-SPOT<sup>®</sup>  
96-Well 4-Spot Plate

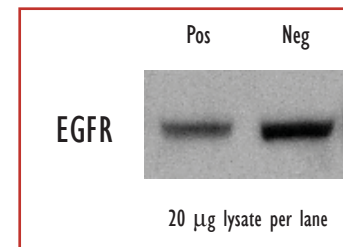


● BSA

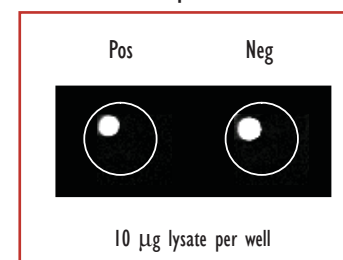


Lysates (μg)	pEGFR Positive			pEGFR Negative			P/N
	Average	StdDev	%CV	Average	StdDev	%CV	
0				117	17	15	
0.02	382	1	0	431	38	9	0.9
0.04	1,046	536	51	700	9	1	1.5
0.08	1,115	81	7	1,268	59	5	0.9
0.16	2,199	111	5	2,489	115	5	0.9
0.31	4,421	203	5	4,866	172	4	0.9
0.63	8,729	93	1	9,086	222	2	1.0
1.25	16,657	489	3	17,907	643	4	0.9
2.5	32,427	1,176	4	35,960	1,232	3	0.9
5	58,184	924	2	63,150	2,567	4	0.9
10	103,256	4,692	5	112,130	465	0	0.9
20	164,260	7,383	4	188,770	4,751	3	0.9

Traditional Western



MSD Experimental



Serum-deprived COS-7 cells (negative) were treated with EGF (100 ng/mL, 10 min)(positive). Whole cell lysates were added to MSD MULTI-SPOT 4-Spot plates coated with anti-total-EGFR antibody on one of the four spatially distinct electrodes per well. Total EGFR was detected with an anti-total-EGFR antibody labeled with MSD SULFO-TAG reagent.

Kit Size	SI2400	SI6000
1 plate	KI51CKD-1	KI11CKD-1
5 plates	KI51CKD-2	KI11CKD-2
20 plates	KI51CKD-3	KI11CKD-3
20 plates (Base)	KI51CKA-3	KI11CKA-3

