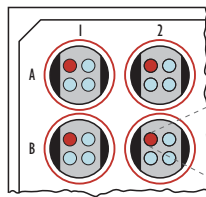


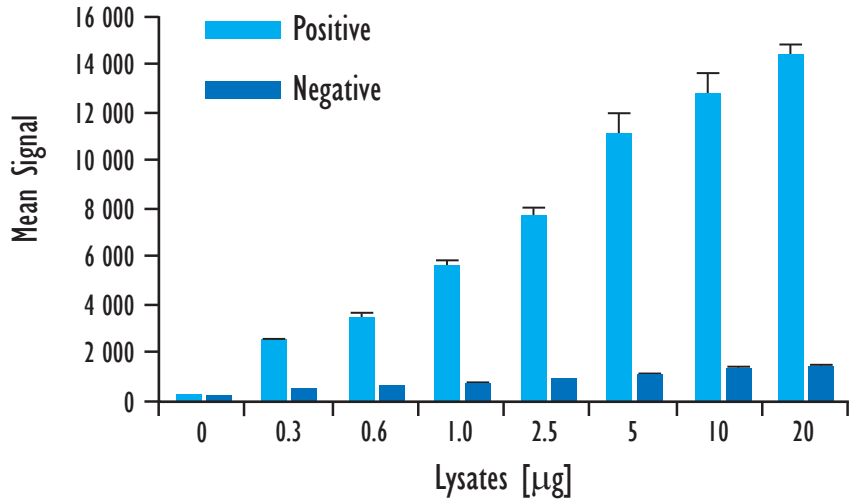
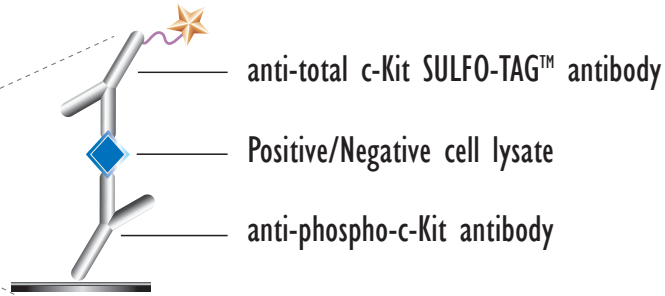
# MULTI-ARRAY<sup>®</sup> Phospho-c-Kit (Tyr721) Assay

## Detection of Phosphorylated c-Kit in Whole Cell Lysate Samples

MSD MULTI-SPOT<sup>®</sup>  
96-Well 4 Spot Plate

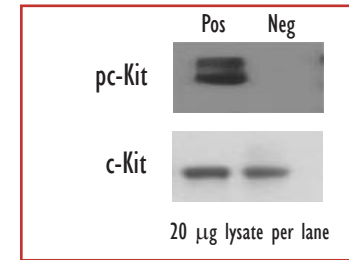


● BSA

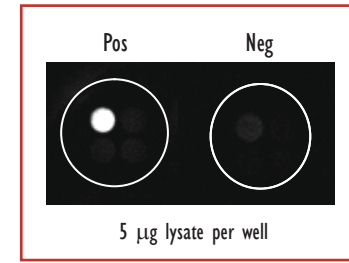


Lysates (μg)	pc-Kit Positive			pc-Kit Negative			P/N
	Average	StdDev	%CV	Average	StdDev	%CV	
0	182	12	7	185	3	1	
0.3	2534	90	4	479	40	8	5
0.6	3457	247	7	657	22	3	5
1.0	5653	185	3	733	51	7	8
2.5	7722	248	3	921	51	6	8
5	11102	836	8	1109	72	7	10
10	12773	850	7	1347	80	6	9
20	14389	427	3	1420	117	8	10

Traditional Western



MSD Experimental



Growing M07e cells were starved in low serum for 30 min (negative) and treated with SCF (100 ng/mL; 2 min)(positive). Whole cell lysates were added to MSD MULTI-SPOT 4 Spot plates coated with anti-phospho-c-Kit antibody on one of the four spatially distinct electrodes per well. Phosphorylated c-Kit was detected with anti-total c-Kit antibody labeled with MSD SULFO-TAG reagent.