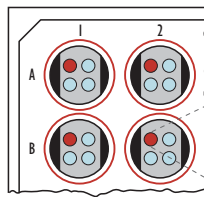


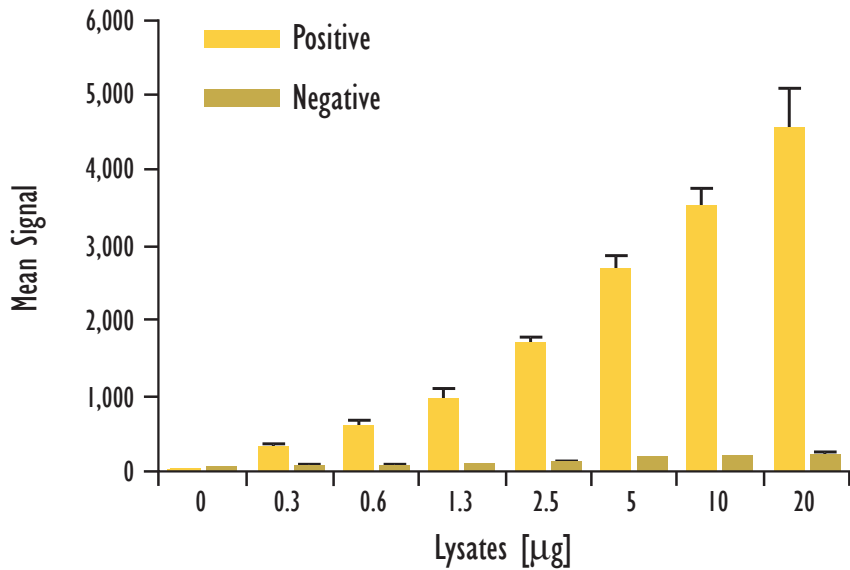
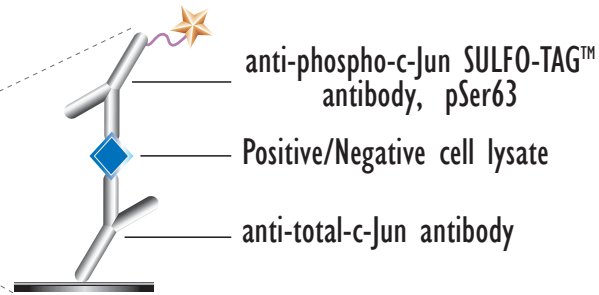
MULTI-ARRAY[®] Phospho-c-Jun (Ser 63) Assay

Detection of Phosphorylated c-Jun in Whole Cell Lysate Samples

MSD MULTI-SPOT[®]
96-Well 4-Spot Plate

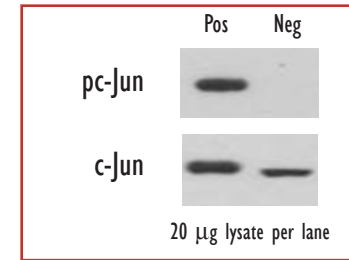


● BSA

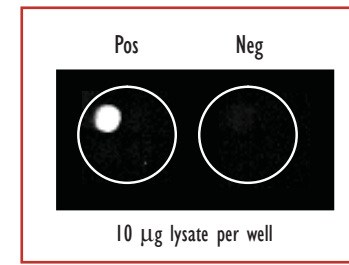


Lysates (µg)	pc-Jun Positive			pc-Jun Negative			P/N
	Average	StdDev	%CV	Average	StdDev	%CV	
0	26	4	16	36	10	28	
0.3	309	41	13	61	19	31	5
0.6	599	65	11	72	26	36	8
1.3	962	119	12	94	4	4	10
2.5	1,699	73	4	122	14	11	14
5	2,689	163	6	172	10	6	16
10	3,517	258	7	194	12	6	18
20	4,569	528	12	221	15	7	21

Traditional Western



MSD Experimental



NIH3t3 cells were serum-deprived (negative) or serum-deprived and harvested 15 min after UV irradiation (40 mJ/cm²) (positive). Whole cell lysates were added to MSD MULTI-SPOT 4 Spot plates coated with anti-total-c-Jun antibody on one of the four spatially distinct electrodes per well. Phosphorylated c-Jun was detected with anti-phospho-c-Jun antibody labeled with MSD SULFO-TAG reagent.

Kit Size	SI2400	SI6000
1 plate	KI51CGD-1	KI11CGD-1
5 plates	KI51CGD-2	KI11CGD-2
20 plates	KI51CGD-3	KI11CGD-3
20 plates (Base)	KI51CGA-3	KI11CGA-3