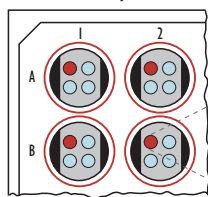


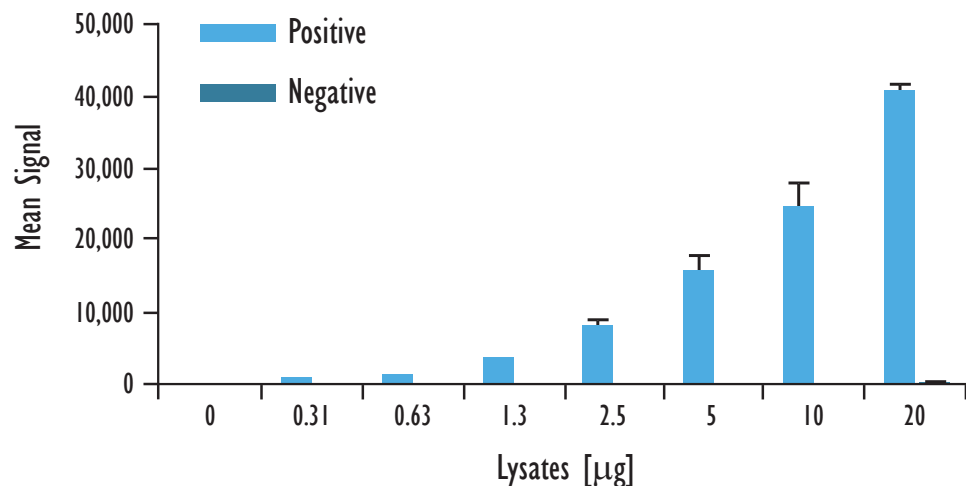
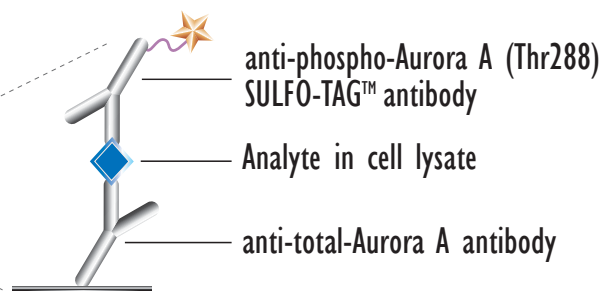
MULTI-ARRAY[®] Phospho-Aurora A (Thr288) Assay

Detection of Phosphorylated Aurora A (Thr288) in Whole Cell Lysate Samples

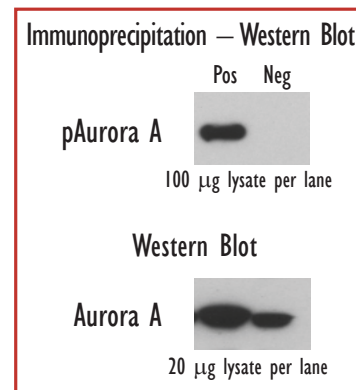
MSD MULTI-SPOT[®]
96-Well 4-Spot Plate



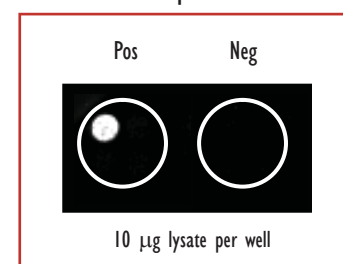
● BSA



Lysates (µg)	Aurora A Positive			Aurora A Negative			P/N
	Average	StdDev	%CV	Average	StdDev	%CV	
0	88	6	7	103	23	22	
0.31	625	12	2	88	12	14	7
0.62	1,328	48	4	104	14	13	13
1.3	3,581	125	3	110	8	8	33
2.5	7,934	743	9	118	30	25	67
5	15,625	1,986	13	139	19	13	112
10	24,689	3,278	13	180	15	8	137
20	40,901	778	2	196	16	8	209



MSD Experimental



Growing HeLa cells (Negative) were treated with nocodazole (0.2mg/mL; 19hr) and calyculin A (50 nM for the final 30min) (positive). Whole cell lysates were added to MSD MULTI-SPOT 4-Spot plates coated with anti-total-Aurora A antibody on one of the four spatially distinct electrodes per well. Phosphorylated Aurora A was detected with anti-phospho-Aurora A antibody labeled with MSD SULFO-TAG reagent.

Kit Size	SI2400	SI6000
1 plate	K150JCD-1	K110JCD-1
5 plates	K150JCD-2	K110JCD-2
20 plates	K150JCD-3	K110JCD-3
20 plates (Base)	K150JCA-3	K110JCA-3



Meso Scale Discovery
A division of Meso Scale Diagnostics, LLC.
www.mesoscale.com