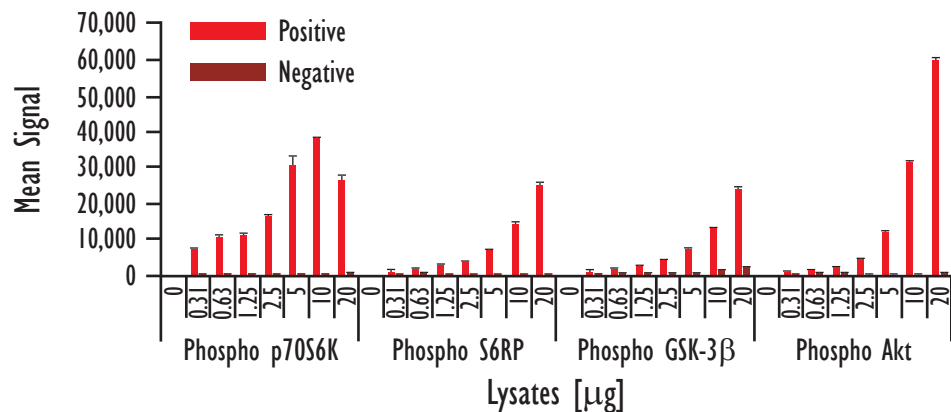
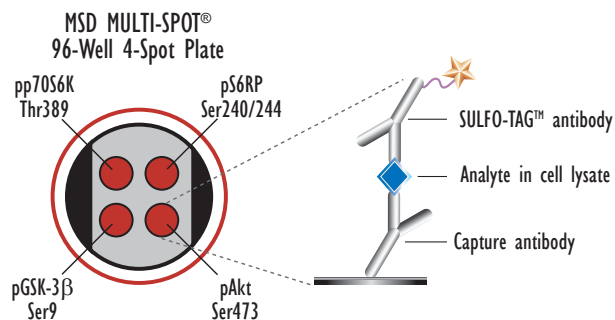


MULTI-SPOT[®] Akt Signaling Panel II

Detection of Phosphorylated Akt (Ser473), p70S6K (Thr389), GSK-3beta (Ser9) and S6RP (Ser240/244) in Whole Cell Lysate Samples

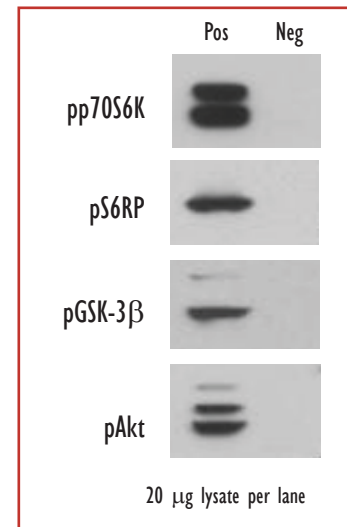


	Lysates (µg)	Positive			Negative			P/N
		Average	StdDev	%CV	Average	StdDev	%CV	
Phospho p70S6K	0				84	4	4	
	0.31	7,530	25	0	448	42	9	16.8
	0.63	10,948	207	2	581	11	2	18.9
	1.25	11,409	150	1	564	4	1	20.2
	2.5	16,437	393	2	441	77	17	37.3
	5	30,257	2,763	9	360	36	10	84.2
	10	38,034	362	1	490	11	2	77.6
Phospho S6RP	0				95	23	25	
	0.31	1,388	24	2	497	26	5	2.8
	0.63	2,013	13	1	636	35	5	3.2
	1.25	3,027	44	1	570	33	6	5.3
	2.5	3,989	213	5	381	28	7	10.5
	5	7,174	264	4	344	21	6	20.9
	10	14,510	532	4	360	23	6	40.3
Phospho GSK-3β	0				102	18	18	
	0.31	1,403	76	5	566	23	4	2.5
	0.63	2,062	46	2	757	33	4	2.7
	1.25	2,858	71	2	850	30	3	3.4
	2.5	4,229	37	1	882	16	2	4.8
	5	7,309	237	3	905	6	1	8.1
	10	13,123	233	2	1585	113	7	8.3
Phospho Akt	0				99	10	10	
	0.31	1,146	42	4	522	19	4	2.2
	0.63	1,591	11	1	627	1	0	2.5
	1.25	2,453	151	6	631	41	6	3.9
	2.5	4,551	82	2	408	6	1	11.2
	5	12,105	498	4	379	4	1	31.9
	10	31,427	169	1	429	18	4	73.3
20	59,373	1,136	2	848	26	3	70.1	

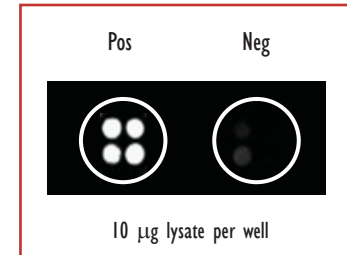


Growing MCF-7 cells were treated with LY294002 (50 µM, 2.5 hours) (negative) or IGF-1 (100 nM, 20 minutes) (positive). Whole cell lysates were added to MSD MULTI-SPOT 4 Spot plates coated with anti-total p70S6K, anti-phospho-S6RP, anti-phospho-GSK-3β, and anti-total Akt antibodies on each of the four spatially distinct electrodes per well. Phosphorylated p70S6K, S6RP, GSK-3β, and Akt were detected with anti-phospho-p70S6K, anti-total S6RP, anti-total GSK-3β, and anti-phospho-Akt antibodies labeled with MSD SULFO-TAG reagent.

Traditional Western



MSD Experimental



Kit Size	SI2400	SI6000
1 plate	KI15177D-1	KI11177D-1
5 plates	KI15177D-2	KI11177D-2
20 plates	KI15177D-3	KI11177D-3
20 plates (Base)	KI15177A-3	KI11177A-3



Meso Scale Discovery
A division of Meso Scale Diagnostics, LLC.
www.mesoscale.com